

**Project 18 - Sewer Installation  
Informational Meeting  
Southgate, Southgate Village**

**Thursday, June 1, 2017  
7 pm – Church of the Nazarene**

**Meeting agenda**

Overview of tonight's meeting	Carolyn Justice-Hinson, PWC
Introduction of PWC staff and contractors	Joe Glass, PWC
Installation timeline/process	
Project Communications	Carolyn Justice-Hinson, PWC
Connection & Assessment Information	
Questions & Answers	PWC Staff, Contractors

---

**Utility Installation Plan**

**Project Management:** PWC Water Resources Engineering Staff

**Contractor:** Sanford Contractors, Inc.

**Design Engineer:** WK Dickson

**Number of services to be installed:** 180

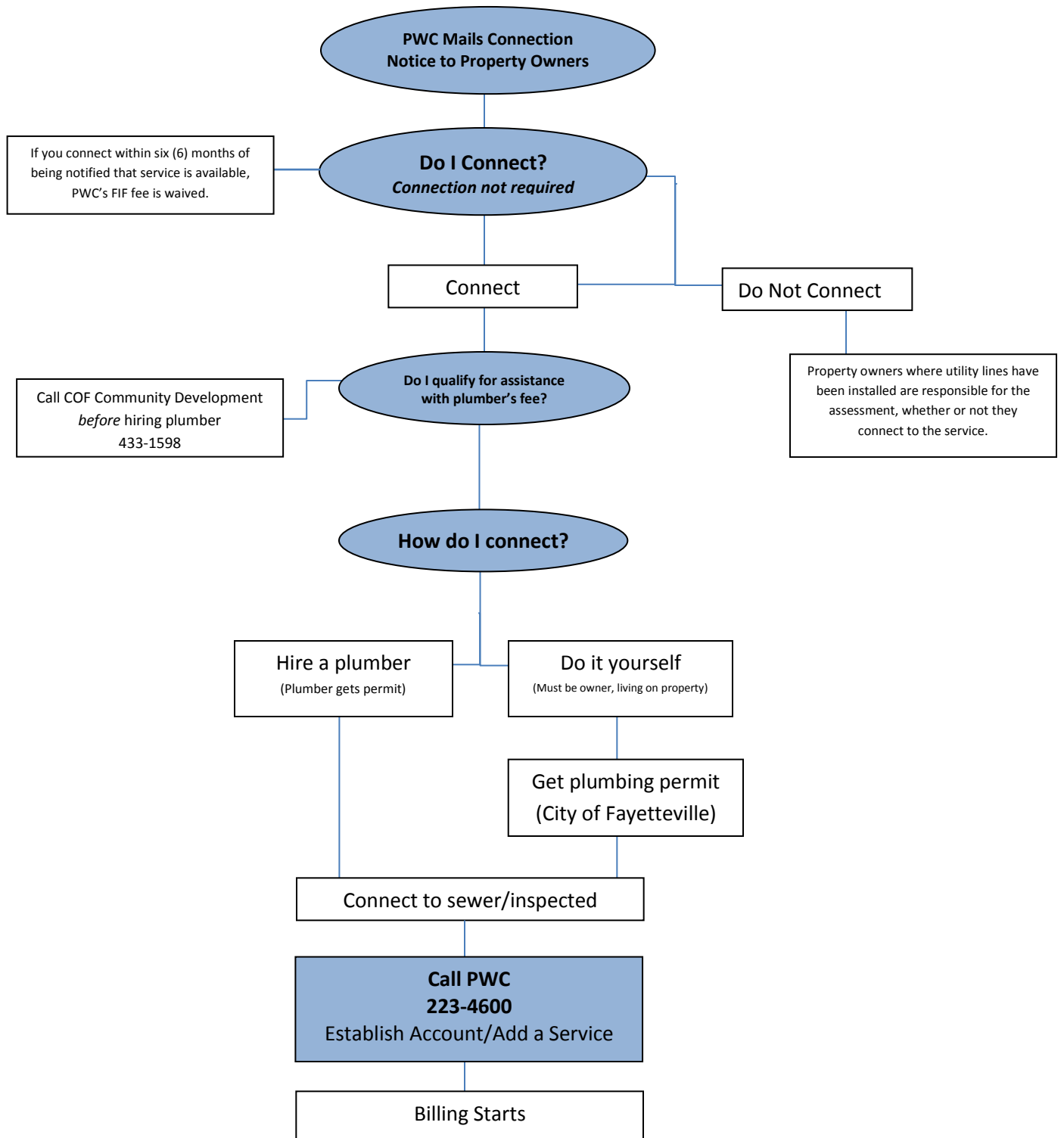
**Construction start date:** June/July, 2017

**Expected completion date:** Sept 2018

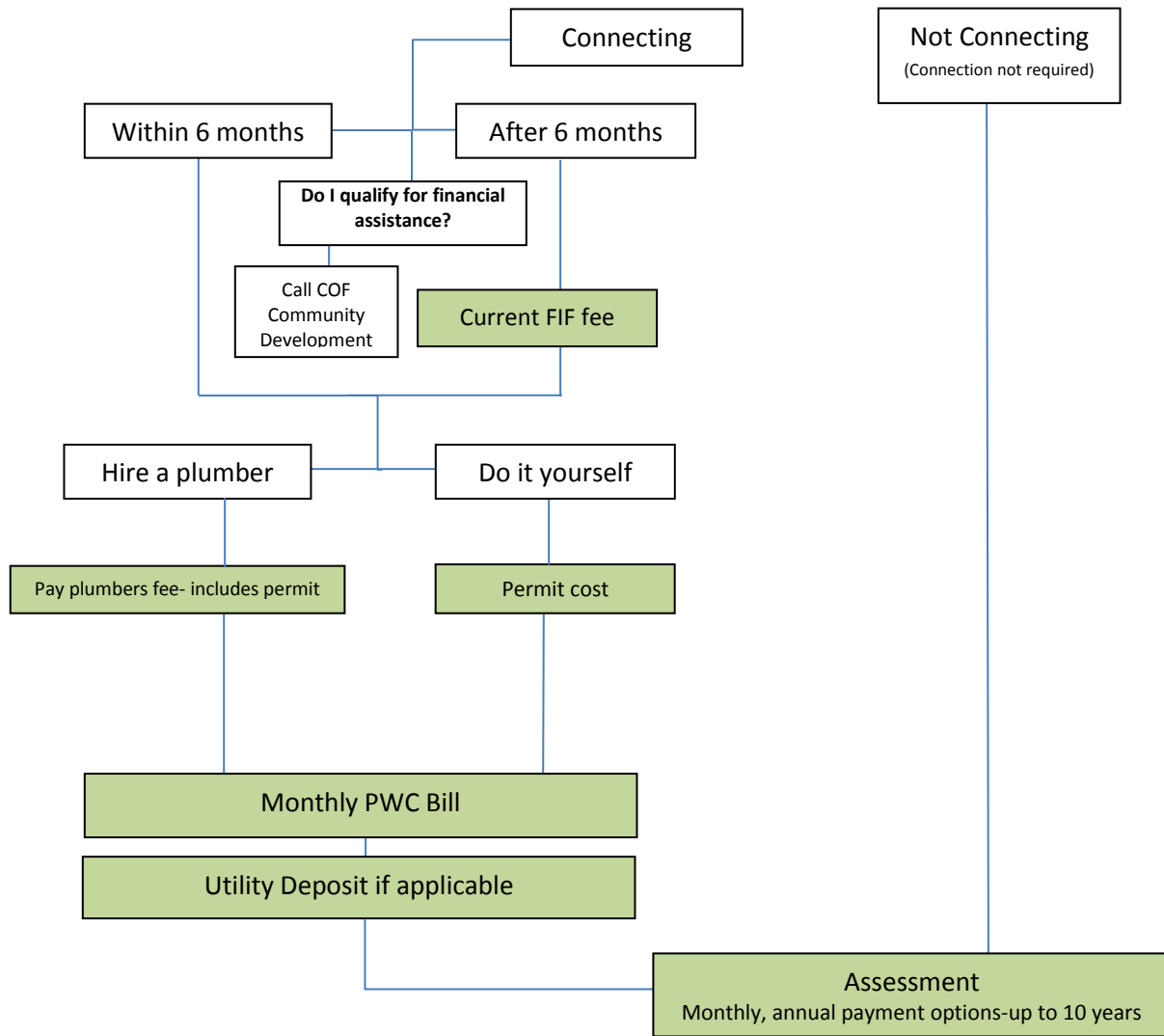
Follow utility installation progress at:  
[www.faypwc.com](http://www.faypwc.com) >City Annexation>Project Updates

**Annexation Construction Questions: 223-4730**  
24-hour PWC Emergency: 1-877-687-7921

# Steps to Connecting to Newly Installed Sewer Service



# Sewer Service Connection Cost/Assessment



	Not Connecting	Connecting in 6 months	Connecting after 6 months
<b>Assessment</b> Cost to install mains and service laterals and shared by the property owners, PWC and the City.	<b>\$5,000</b>	<b>\$5,000</b>	<b>\$5,000</b>
<b>Facility Investment Fee (FIF)*</b> A fee for all new users of PWC's sewer/water systems, which helps offset the impact of expansion on our treatment plants. Annexed properties have FIF waived if connection is made with 6 months of service becoming available	<b>\$0</b>	<b>\$0</b>	<b>\$660*</b>
<b>Plumbers Fee</b> Paid directly to plumber; amount determined by job/plumber	<b>\$0</b>	<b>Plumber's quote</b>	<b>Plumber's quote</b>
<b>Monthly Sewer Bill*</b> Begins once connected; billed based on water usage if customer has PWC water; billed as flat fee if another water provider	<b>\$0</b>	PWC Water Customer- \$5.25 per 1,000 gallons* Other - \$34.60 flat monthly fee*	PWC Water Customer- \$5.25 per 1,000 gallons* Other - \$34.60 flat monthly fee*
<b>Utility Deposit-</b> if applicable	<b>\$0</b>	<b>\$64*</b>	<b>\$64*</b>
*Current amount. Will pay current amount as of connection date.			