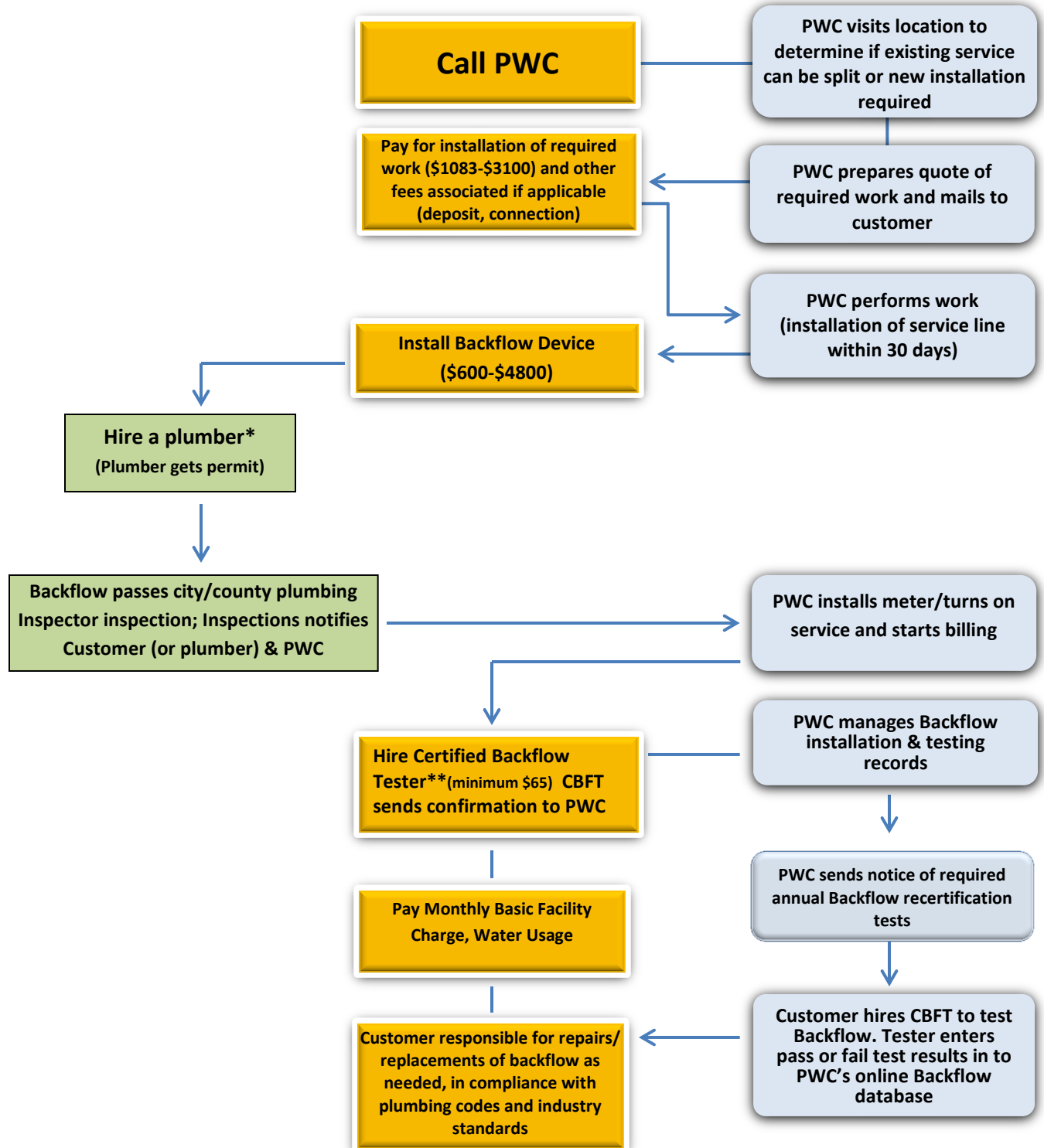


## HOW TO GET AN IRRIGATION METER & BACKFLOW DEVICE FOR COMMERCIAL/INDUSTRIAL CUSTOMERS

NC General Statutes governing Public Water Supplies require a separate irrigation meter for all new in-ground irrigation systems connected to the public water supply and require lawn irrigation systems be equipped with a backflow preventer to protect our drinking water from chemicals present on irrigated areas. Commercial property owners are responsible for owning and maintenance of the backflow device and ensuring the backflow device is in working condition, while PWC is responsible for addressing compliance issues with the customer as needed.

Below are the steps required and estimated costs (*subject to change*) associated with having a commercial irrigation meter and backflow device installed:



Resources Available on PWC website  
 \* <https://www.faypwc.com/local-plumbing-hvac-contractors/>  
 \*\* <http://www.faypwc.com/wp-content/uploads/2016/10/certified-testers-2016-10.pdf>  
 \*\*\* <https://www.faypwc.com/residential-rates/>