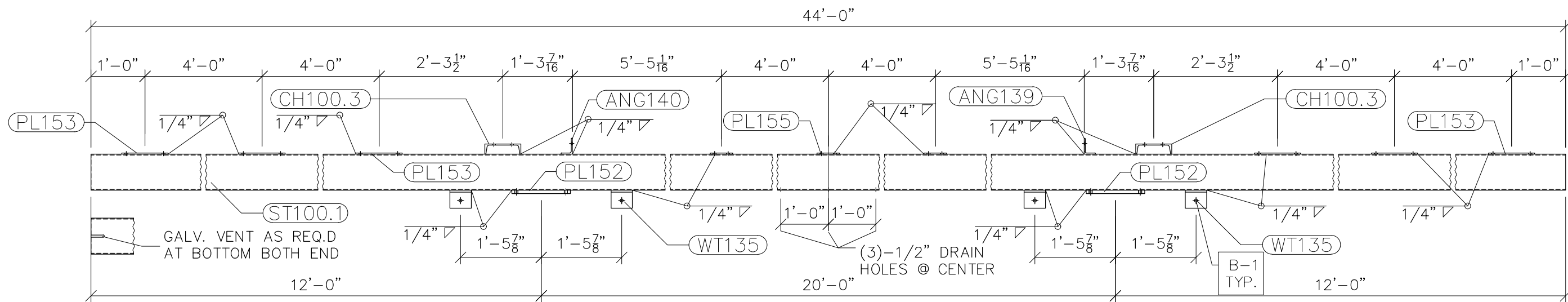
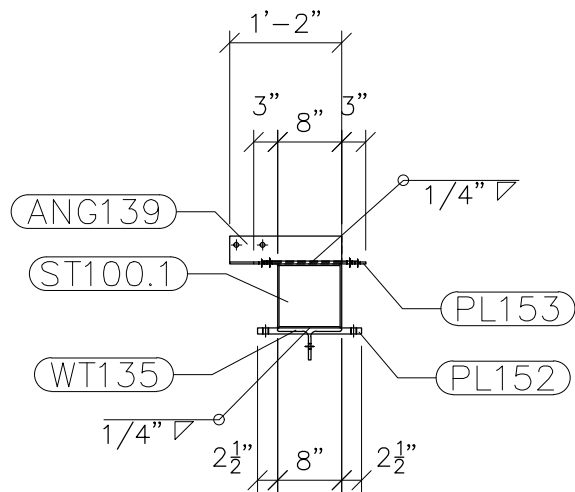


Top View



G100.1 Front View

- NOTES:
- 1) ASTM 325 ERECTION BOLTS
 - 2) ALL HOT DIP GALVANIZED AFTER FABRICATION (ASTM A123)
 - 3) ALL HOLES 11/16" DIA. FOR 5/8" DIA. BOLTS UNLESS NOTED
 - 4) PIECE MARK STAMPED INTO METAL WITH NOT LESS THAN 3/8" HIGH CHARACTERS BEFORE GALVANIZING
 - 5) ALL WELDING ELECTRODES SHALL BE E7021
 - 6) EDGE DISTANCE 1" UNLESS NOTED



Right View

BILL OF MATERIAL				
POS. NO.	QTY	DESC.	LENGTH	
G100.1	1			
ANG139	1	L3-1/2x2-1/2x1/4	1'-2"	5.72
ANG140	1	L3-1/2x2-1/2x1/4	1'-2"	5.72
PL152	2	PL 3/4"x1'-1"	1'-1"	72.03
PL153	6	PL 1/4"x10 1/4"	1'-2"	61.04
PL155	3	PL 3/8"x5"	1'-0"	19.18
ST100.1	1	HSS8x8x3/16	44'-0"	862.90
WT135	4	WT4x15.5	4 3/4"	24.54
CH100.3	2	C8x11.5	8"	15.34
BLACK WEIGHT:			1066.47 LBS.	
GALVANIZED WEIGHT:			42.66 LBS.	
TOTAL WEIGHT:			1109.13 LBS.	

SEE DRAWING No. LS-05 FOR CH100.3, ANG139, ANG140, PL152, PL153, WT135 & END COVER DETAILS.

PRELIMINARY - DO NOT USE FOR CONSTRUCTION	NO.	REVISIONS	DATE	PUBLIC WORKS COMMISSION OF THE CITY OF FAYETTEVILLE FAYETTEVILLE, NORTH CAROLINA	
	0	ISSUED FOR BIDS	08/02/21		
				BLACK AND DECKER 69 TO 15 X 25KV SUBSTATION LOWSIDE DETAILS (BEARLT)	
				Booth & Associates, LLC <small>5811 Glenwood Avenue Raleigh, NC 27612 CONSULTING ENGINEERS NC F-0221</small>	
				DWN. RLT	DATE 08/02/21
				CKD. MJM	APPD. MJM
				SCALE: NONE	© 08/21
					DWG. NO. LS-02 12502_LS