

Connecting to Sewer Services

Project 24: Section A Cliffdale Estates

Virtual Meeting

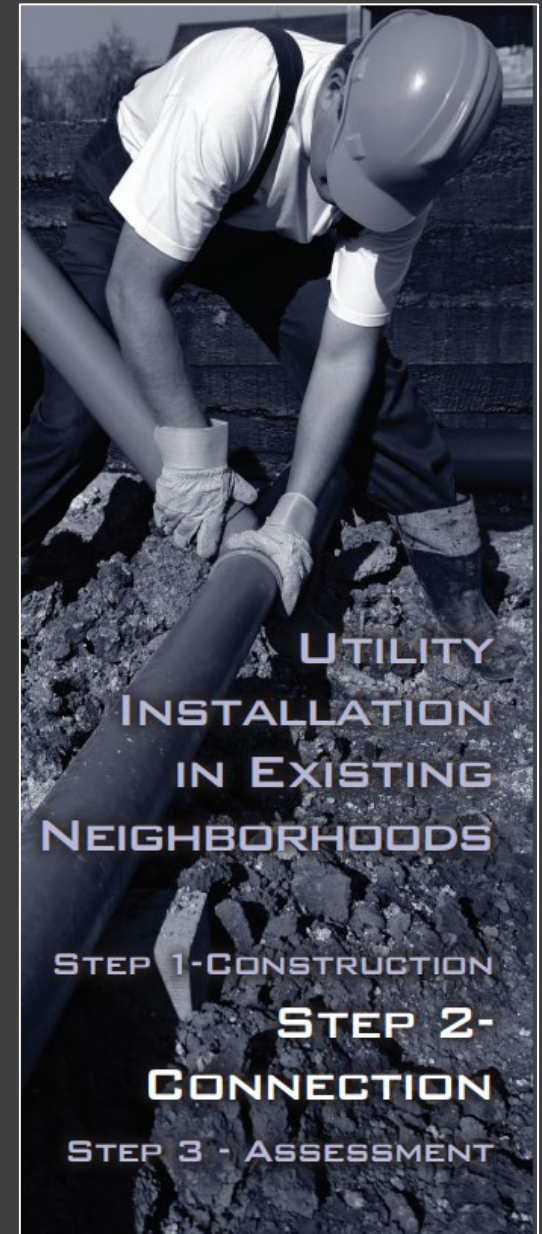
Presented by Fayetteville PWC

March 9, 2022

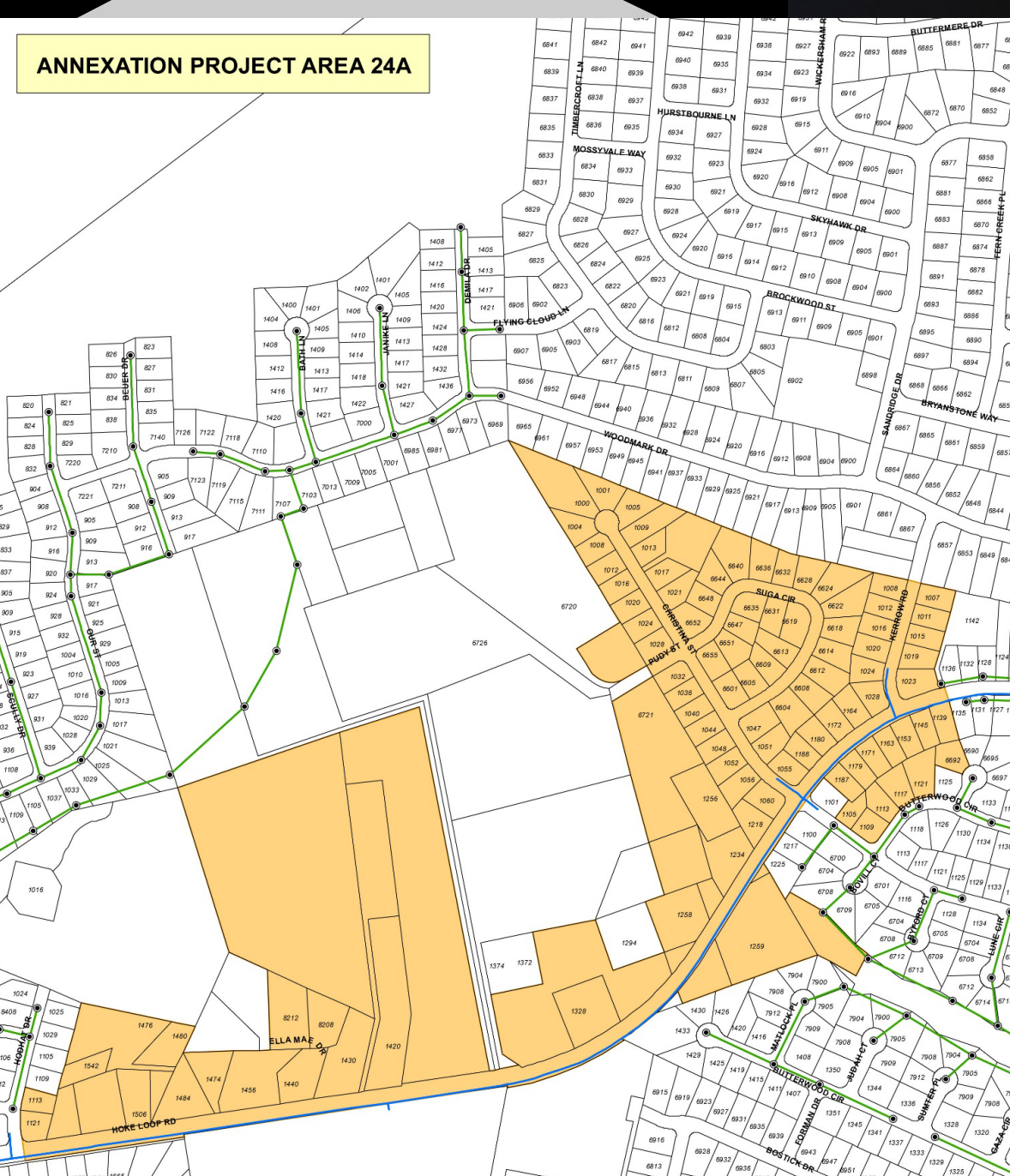
6:30 p.m.

Presentation/Recorded Meeting available:

[//www.faypwc.com/annexation-project24/](http://www.faypwc.com/annexation-project24/)



ANNEXATION PROJECT AREA 24A



**FAYETTEVILLE
PUBLIC WORKS COMMISSION**
P.O. BOX 1089, FAYETTEVILLE, N.C. 28302-1089

Connection Notice

Tonight's meeting

Project 24: Section A Cliffdale Estates

Connection is now available

Tonight's Meeting

- Post Construction/Paving
- Steps to Connecting to Sewer Service
- Tips for Hiring a Plumber
- What Happens To Your Septic Tank
- How Sewer is billed
- Breakdown Costs Related to Sewer Connection & Assessments
- Review Assessment Process

Ask Questions Using Zoom Chat feature

- Construction within this project area is complete. This includes sanitary sewer installation, pavement patching, and restoration.
- There is a one-year warranty on this project for any workmanship issues.
 - PWC will perform a 6-month and 1 year warranty review. Any issues will be addressed at that time.
 - Should you have any issues with restoration or construction, please contact PWC at (910) 223-4730.
- The streets within the neighborhood will be added to the City of Fayetteville's Resurfacing Contract and will be overlaid in 12-18 months.



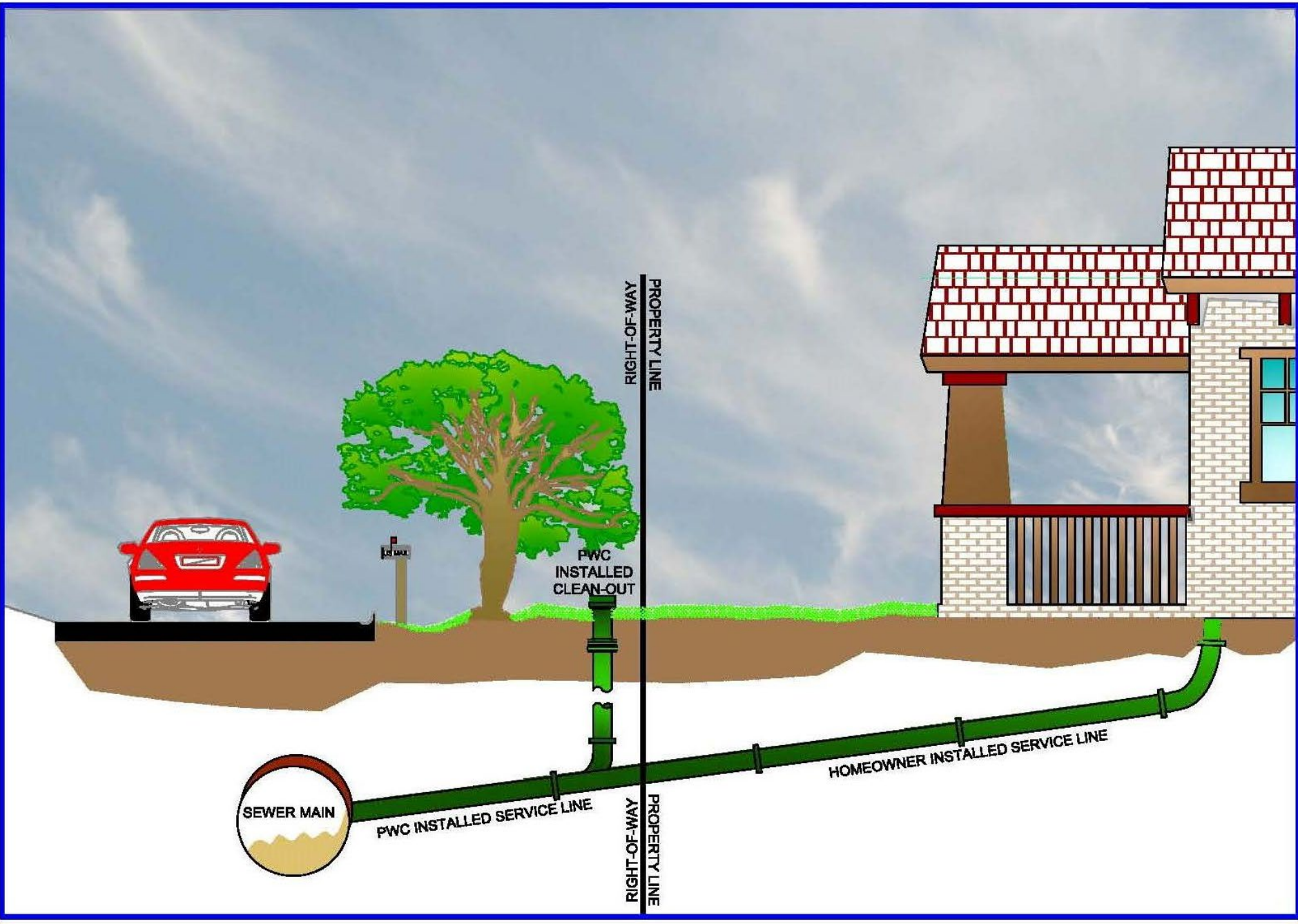
Construction Completion and Warranty

AJ Riddle

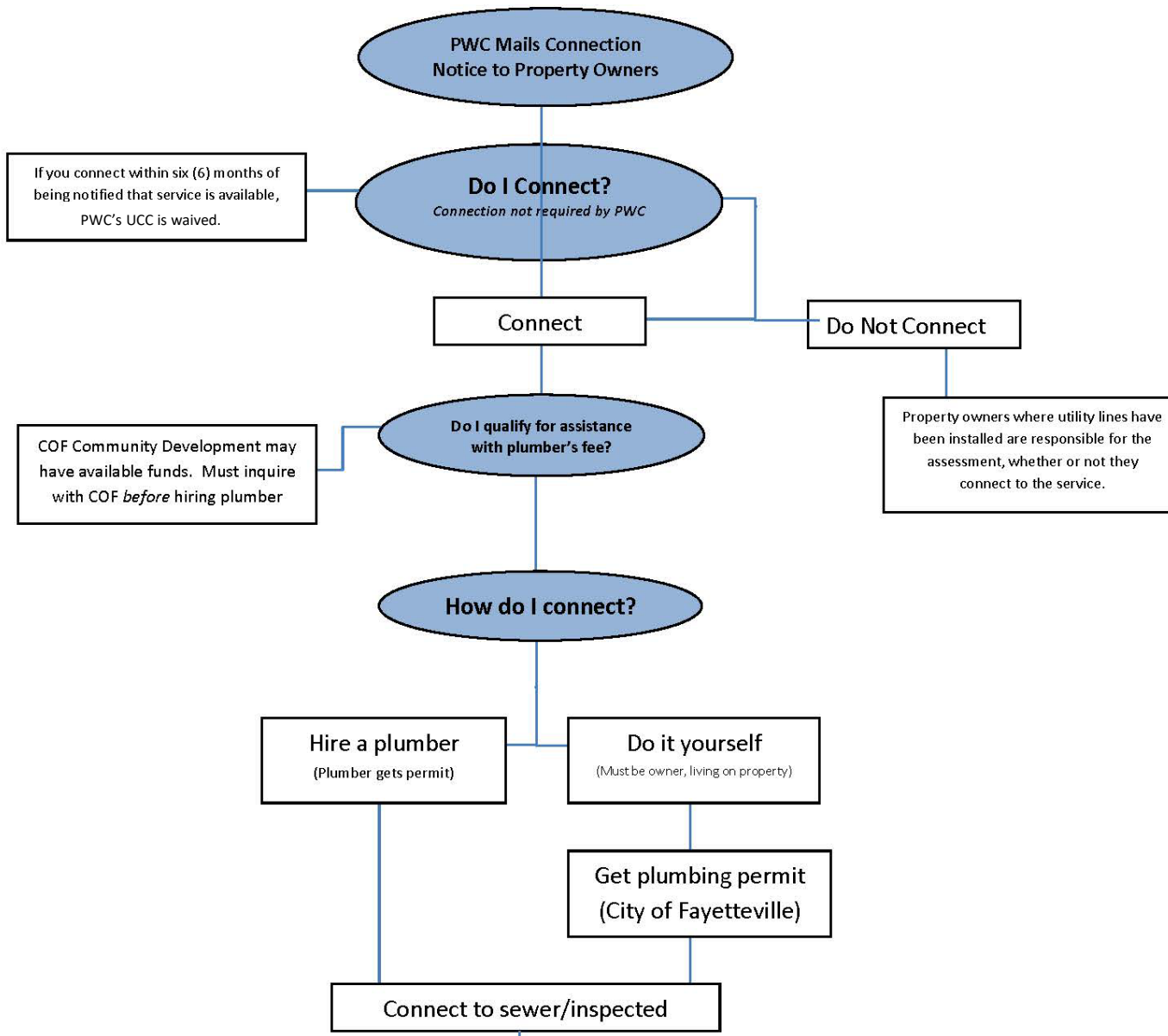
PWC Water Resources Engineering

Connecting to Sanitary Sewer

- This process involves changing your home's plumbing from the existing septic tank to the newly installed sewer system.
- Your wastewater will then go through the sewer system to the PWC treatment plant to be cleaned and returned to the Cape Fear River.



Steps to Connecting to Newly Installed Sewer Services



Hire a plumber or DIY

- PWC has a list of licensed, local plumbers on web & handout.
- PWC does not endorse, promote or prefer any specific plumber. This list is for informational purposes only and the selection of a vendor is the sole responsibility of the customer.
- The licensees listed have certified that they pay taxes to Cumberland County or employ at least two (2) CC residents at a place of business within CC.



Plumber tips

Fayetteville Area Plumbers Association

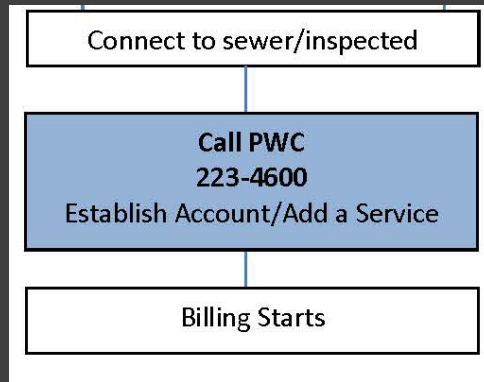
- Every property is different- location/distance of cleanout vs home plumbing, landscaping
- Get at least 3 quotes- in person where they can give proper evaluation of your property/plumbing
 - Avoid phone quotes
 - Some plumbers use on-line mapping to provide quotes, may not be accurate
- Consider local plumbers & ask other residents for experiences
- “You get what you pay for”- Cheaper is not always better
- Establish post-work expectations before work starts: cleanup, fill-in, landscaping
- Plumbers work guaranteed for life of work; if plumber ‘offers’ warranty, they are already, by law, required to provide it
- If connecting before waiver ends, schedule early:
 - Work must be complete and inspected by waiver deadline
 - Demand on plumbers/connections increases near deadline
 - No plumber can get PWC to make an ‘exception’ & extend waiver deadline.

What happens to my septic tank?

- Must be completely disconnected.
- Currently, there are no plumbing code requirements for existing septic tanks when connecting to sewer service.
- The Cumberland County Health Department, for safety purposes, recommends pumping out the septic tank then crushing and filling in with soil.



Your PWC Account/Billing



PWC Customer Programs
(910) 223-4600

- Do you already have a PWC account?
- How PWC knows you are connected
 - You call PWC (or)
 - PWC receives inspections report
- When will billing start?
- What are the monthly charges?
 - If you don't have PWC water- you are billed a flat rate

Sample Bills:

1. Sewer Service Only

2. Water & Sewer Service



My Sewer Bill Details

Sewer Flat Rate Charges

02/07/22 - 03/08/22 (29 Days)

Flat Monthly Rate for 1 Account/s

Sewer Utility Line Relocation Rider

Total Sewer Charges

\$39.40

\$1.00

\$40.40

1. Sewer Only



2. Water & Sewer



My Water Bill Details

Water Residential Charges

02/07/22 - 03/08/22 (29 Days)

Basic facility charge - Inside City

Water Charge - 4510 GAL

Water Utility Line Relocation Rider

Total Water Charges

\$18.00

\$11.98

\$2.00

\$31.98



My Sewer Bill Details

Sewer Residential Charges

02/07/22 - 03/08/22 (29 Days)

Basic facility charge - Inside City

Usage charge - 4510 GAL

Sewer Utility Line Relocation Rider

Total Sewer Charges

\$18.00

\$24.13

\$1.00

\$43.13

My Usage History

Water Meter: 78082025

Reading Period: 02/07/22 - 03/08/22

Current Read

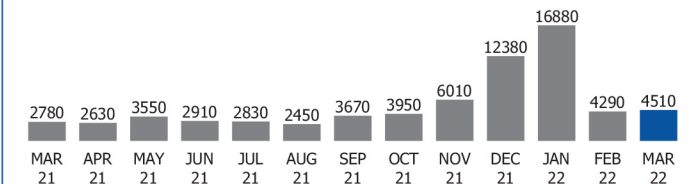
298420

Previous Read

293910

Usage

4510 GAL



Property Owner Costs

	Not Connecting	Connect <u>before</u> waiver deadline Deadline is Sept. 16, 2022	Connect <u>after</u> waiver deadline
Assessment Cost to install mains and service laterals and shared by the property owners, and PWC.	\$5,000	\$5,000	\$5,000
Utility Connection Charge (UCC)* A fee for all new users of PWC's sewer/water systems, which helps offset the impact of expansion on our treatment plants. Annexed properties have FIF waived if connection is made within 6 months of service becoming available. <small>Formally known as Facility Investment Fee (FIF)</small>	\$0	\$0	\$1107*
Plumbers Fee Paid directly to plumber; amount determined by job/plumber	\$0	Plumber's quote	Plumber's quote
Monthly Sewer Bill* Begins once connected; billed based on water usage if customer has PWC water; billed as flat fee if another water provider	\$0	PWC Water customer \$5.35 per 1,000 gallon* Aqua water customer Flat fee- \$39.40	PWC Water customer \$5.35 per 1,000 gallon* Aqua water customer Flat fee- \$39.40
Utility Deposit- if applicable	\$0	\$64*	\$64*
*As of July 1, 2021. Will pay current amount as of connection date.			

Assessments

- You are not required to connect; however, you are still responsible for the assessment.
- PWC will mail you information on the City Council Assessment Confirmation Public Hearing. (Expect in Fall/Winter 2022, Questions: Mark Brown, PWC, 910-223-4224)
- City Council confirms the assessment.
- PWC mails assessment information and we will hold informational meeting to explain assessments/payment options.
- Contact City of Fay- Community Development for assistance eligibility. 433-1599
- For all projects related to Annexation Phase V- The City Council has set the assessment for \$5,000.
- Payment options for the assessment: one-time payment, monthly & yearly payments up to 10 years.
- Interest for monthly, annual payments: prime + 2% (Set by City Council; prime as of July 1st)

Connecting to Sewer Services

Presentation/Recorded Meeting available:

[//www.faypwc.com/annexation-project24/](http://www.faypwc.com/annexation-project24/)

PWC staff available to answer questions:

Call: 910-223-4600

Email: buildersgroup@faypwc.com

