

WADE R. FOWLER, JR., COMMISSIONER
EVELYN O. SHAW, COMMISSIONER
RONNA ROWE GARRETT, COMMISSIONER
DONALD L. PORTER, COMMISSIONER
MARION J NOLAND, INTERIM CEO/GENERAL MANAGER

FAYETTEVILLE PUBLIC WORKS COMMISSION
955 OLD WILMINGTON RD
P.O. BOX 1089
FAYETTEVILLE, NORTH CAROLINA 28302-1089
TELEPHONE (910) 483-1401
WWW.FAYPWC.COM

March 03, 2023

TO: All Prospective Bidders

FROM: Carla Wint, Procurement Advisor

**SUBJECT: ADDENDUM NO. 3
PWC2223036 - EXCITATION SYSTEM IN STEAM TURBINE
GENERATOR AT THE BUTLER WARNER GENERATION
PLANT**

1. The Specifications and Bid Documents are hereby modified or clarified per the attached documents.
2. The foregoing changes or clarifications shall be incorporated in the original Bid Documents and a signed copy of this Addendum No. 3 shall accompany the bid to acknowledge the bidder's receipt and familiarity with the changes and/or clarifications.

CW: csk

Acknowledgment:

Company _____

By _____

Date _____

**EXCITATION SYSTEM IN STEAM TURBINE GENERATOR AT
THE BUTLER WARNER GENERATION PLANT**

ADDENDUM NO. 3

MARCH 03, 2023

FAYETTEVILLE PUBLIC WORKS COMMISSION

NOTICE TO BIDDERS:

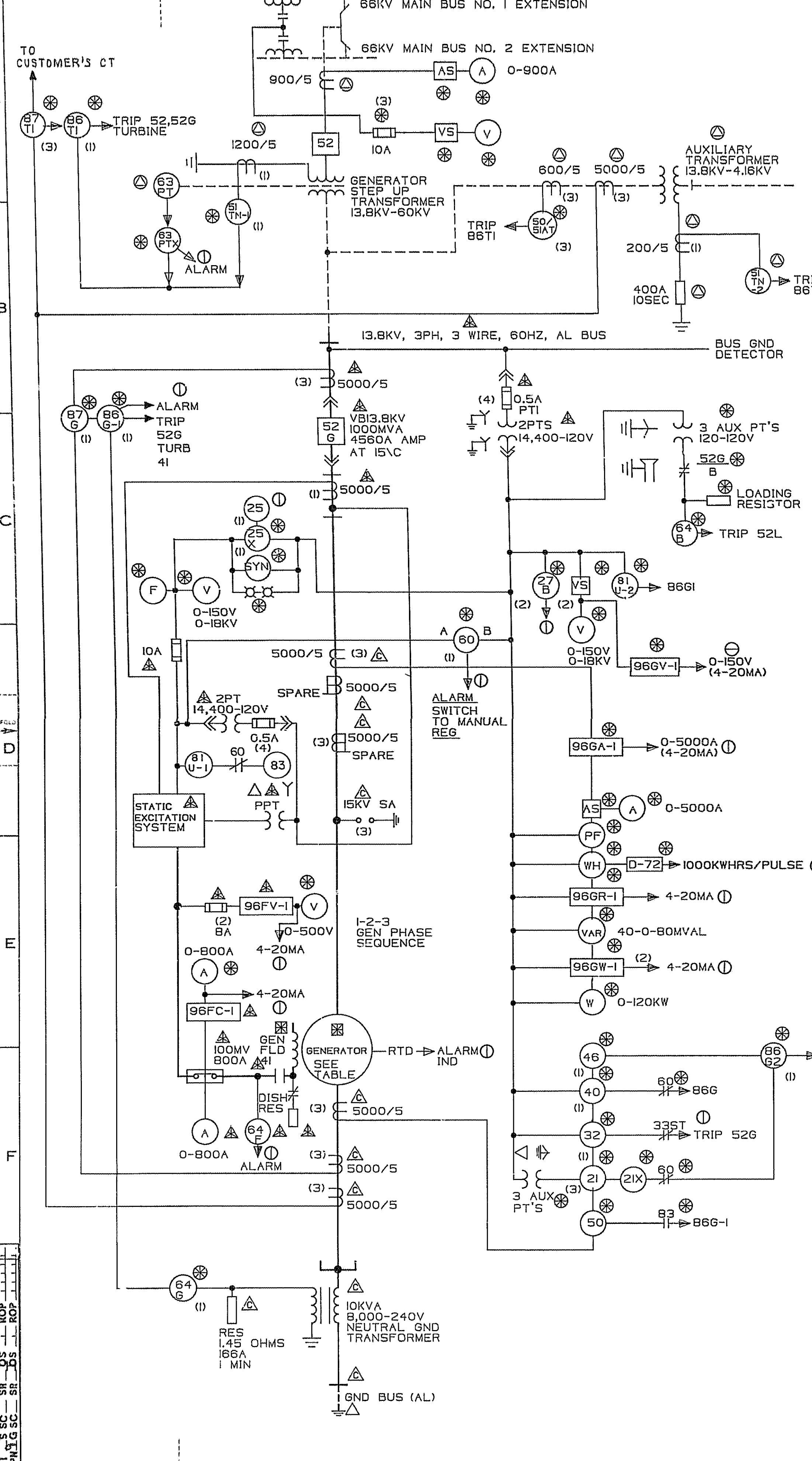
This Addendum shall become a part of the Contract Documents for the above project. The selected Contractor shall be responsible for notifying all subcontractors of the contents of this Addendum.

Revised or newly issued wording, drawings, or specifications contained in this Addendum shall supersede and shall take precedence over any conflicting information which was previously issued. All other terms and conditions of the Contract Documents remain unchanged.

The following is the drawing and name plate received prior to the deadline for bid opening.

UNLESS OTHERWISE SPECIFIED USE THE FOLLOWING:

APPLIED PRACTICES	SURFACES	TOLERANCES ON MEASUREMENTS UNLESS OTHERWISE SPECIFIED
	✓	FRACTIONAL DECIMALS ANGLES



- LEGEND**
- A AMMETER
 - AS AMMETER SWITCH
 - F FREQUENCY METER
 - PF POWER FACTOR INDEX
 - SYN SYNCHROSCOPE
 - T TEMPERATURE METER
 - TS TEMPERATURE METER SWITCH
 - VAR VARMETER
 - V VOLTMETER
 - VS VOLTMETER SWITCH
 - W WATT METER
 - WH WATTHOUR METER
 - ⊠ INDICATING LIGHT

- RELAY & DEVICE NOMENCLATURE**
- STANDARD**
- 21 SYSTEM BACK-UP DISTANCE LINE RELAY (CEB)
 - 21X DISTANCE LINE RELAY TIMER (SAM)
 - 25 MICRO SYNCHRONIZER
 - 25X SYNCHRONIZER CHECK (GXS)
 - 27B BUS UNDERVOLTAGE RELAY (HGA)
 - 32 REVERSE POWER RELAY (GGP)
 - 33ST STEAM STOP VALVE LIMIT SWITCH
 - 40 LOSS OF EXCITATION RELAY (CEH)
 - 41AC GEN EXCITATION SUPPLY BREAKER
 - 46 NEGATIVE SEQUENCE RELAY (INC)
 - 496 STATOR TEMPERATURE RELAY (IRT)
 - 50 OVERCURRENT RELAY (CHCI2)
 - 50/5IAT-2 AUX SUPPLY OVERCURRENT RELAY (IFC)
 - 51TN-1,2 SYS GROUND FAULT BACKUP RELAY (IFC)
 - 52G GENERATOR BREAKER
 - 60 VOLTAGE BALANCE RELAY (CFVB)
 - 63PT TRANSFORMER FAULT PRESSURE SWITCH
 - 63PTX AUXILIARY RELAY FOR 63PT (HAA)
 - 64B BUS GROUND RELAY (IFV)
 - 64F GENERATOR FIELD GROUND RELAY (PJG)
 - 64G GENERATOR GROUND RELAY (IFV)
 - 83 AUX RELAY, TDO (HGA)
 - 86G-1,2 GENERATOR LOCKOUT RELAY (HEA)
 - 86T TRANSFORMER LOCKOUT RELAY (HEA)
 - 876 GENERATOR DIFFERENTIAL RELAY (CFD)
 - 87T TRANSFORMER DIFFERENTIAL RELAY (STD)
 - 96FC-1 TRANSDUCER FIELD CURRENT
 - 96FV-1 TRANSDUCER FIELD VOLTAGE
 - 96GA-1 TRANSDUCER AMPERE
 - 96GR-1 TRANSDUCER VARS
 - 96GV-1 TRANSDUCER VOLTAGE
 - 96GW-1 TRANSDUCER WATTS
 - 81U-1 UNDERFREQUENCY RELAY (IJF)
 - 81U-2 UNDERFREQUENCY RELAY (SFF)

GENERATOR RATING

KVA	85,882
P.F.	0.85
FREQ HZ	60
KV	13.8

- EQUIPMENT LOCATION KEY**
- ⊗ GENERATOR CONTROL PANEL
 - ⊠ GENERATOR COMPARTMENT
 - △ CUSTOMER'S EQUIPMENT
 - ⊙ GE EQUIP MTD SEPARATE FROM PKG
 - ⊡ COLLECTOR COMPARTMENT
 - ⊠ GEN. AUX. COMPT.
 - ⊙ STEAM TURBINE CONTROL PANEL (STCP)

REVISIONS

NO.	DESCRIPTION	DATE	BY	PRINTS TO
1	DESIGN			
2	REVISION			
3	REVISION			
4	REVISION			

MADE BY: R. FAKNER 7/30/87
 ISSUED: JULY 30, 1987

APPROVALS: GAS. TURBINE
 SCHENECTADY

166D1461
 CONT. ON SHEET F

DESIGN NO.

BE 20941 001

3 PHASE TRANSFORMER

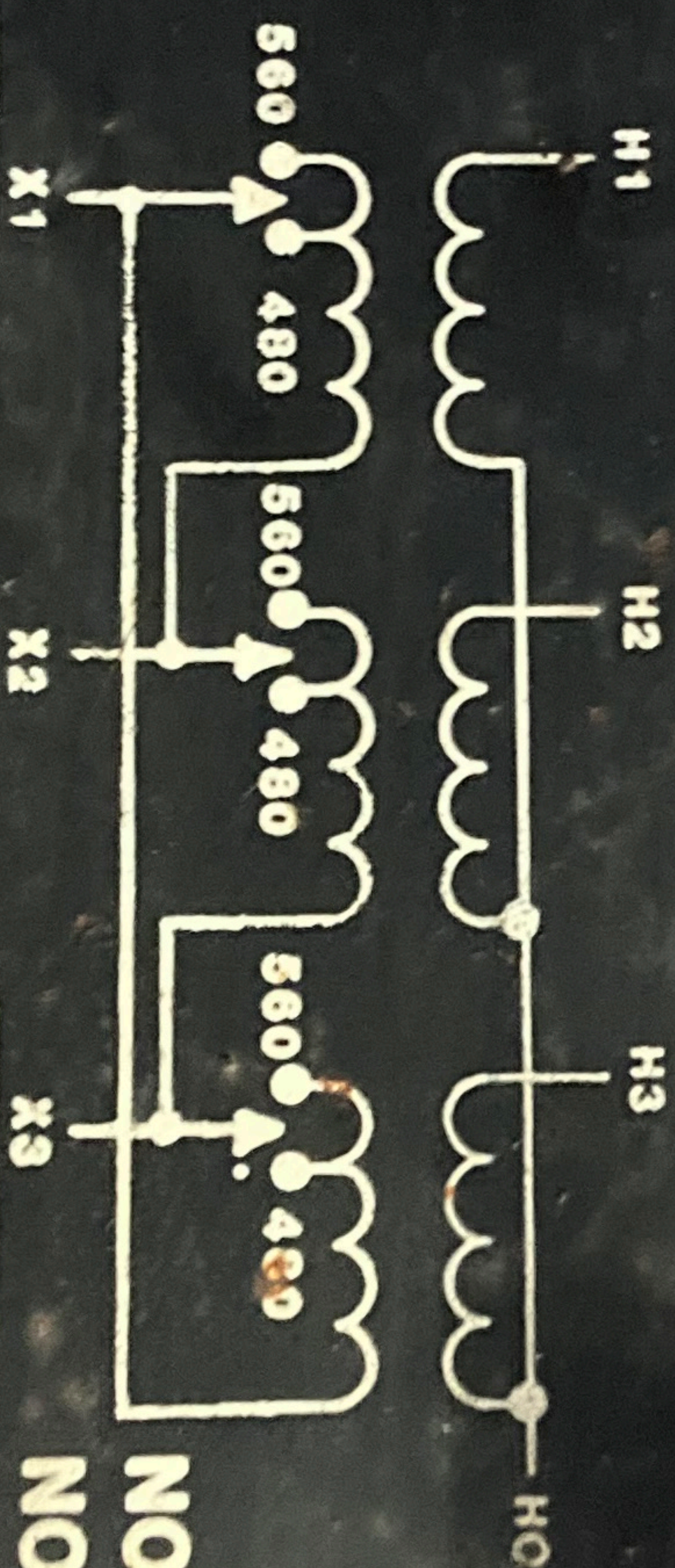
H1-H2-H3 VOLTS

X1-X2-X3 VOLTS

APPROX. WEIGHT LBS.

APPROX. IMPED. % @ KVA

B Basler Electric
Highland, Illinois



NOTE: 560V AND 480V TAPS CAN NOT BE USED SIMULTANEOUSLY.
CLASS 185°C CONVECTION

560V KVA	480V KVA	°C AMB.
560V	480V	
1190	1020	0
1115	956	10
1050	900	20
970	832	30
885	759	40
815	639	50
740	634	60