

PWC CONNECTIONS

Your Link to News & Information from the Fayetteville Public Works Commission April 2023

Upcoming Events

Safe Digging Month
April 1st - 30th

National Lineman Appreciation Day
April 18th

Earth Day
April 22nd

41st Annual Dogwood Festival
Festival Park
Visit PWC's booth
Saturday & Sunday
April 29th - April 30th
www.faydogwoodfestival.com/

National Drinking Water Week
May 1st - May 7th

PWC Connections: The Podcast

Listen to PWC's Podcast for FREE on your favorite podcast listening platform.



Learn More!



PWC TV: Now Streaming!

Roku fireTV

androidtv

Watch *Your PWC Connections* anytime on your favorite streaming device in addition to daily airings on Fay TV - the City of Fayetteville's government access channel on Spectrum Cable channel 7. *Your PWC Connections* is also available on PWC's Youtube channel & website.



Before You Spring into Action... Spring Planting? Have a Plan!

Don't plant tall-growing trees where they'll interfere with power lines. And be strategic - for example, put trees where they'll provide shade and/or windbreaks to reduce warm-weather energy costs.

Don't Crowd Our Transformers!

If you have a green PWC transformer box on your property, DO NOT PLANT anything within 9 feet from the front of the box and 3 feet from each side. It impedes our line workers' ability to make repairs and restore your power.



Remember Easement/Right-of-Way

Check to see if you have an easement/right-of-way on your property, and be sure to keep those areas clear of fences, sheds or other permanent structures.

Call NC811 Before You Dig...

... if your plans include significant excavation. Through this free service, the utility companies serving your property will come and mark the location of underground lines, so you can dig carefully around them.



Consider Water-Wise Gardening.

Landscape with plants, flowers and shrubs that require minimal watering and grow well in shade. Use mulch. Choose drought-resistant grasses, such as Centipede or Bermuda, and reduce lawn area with ground cover, mulched beds, etc.



Visit our website for more detailed information, as well as warm-weather tips to conserve water and power at faypwc.com/before-you-spring-into-action.



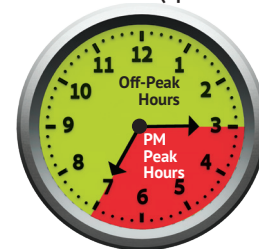
Reminder: Summer Time-of-Use Hours

April 1 marked the beginning of Summer Time-of-Use (TOU) Electric Rates. Peak hours are 3pm-7pm weekdays and will run through October. The afternoon during this time of year, is when energy demand is at its highest and costs the most. Shifting use on weekdays to Off-Peak hours (20 hours each weekday) and all weekend will save you 35%.

SAVE
35%

Visit PWC's Time-of-Use page for details and conservation tips:
www.faypwc.com/time-of-use-rates/

Summer Peak Hours (April - October)



3PM-7PM Weekdays



Make Every Day, Earth Day!

- Save water- fix a leak!
- Save Energy- Use LED bulbs
- Reduce Waste- Switch to e-billing
- Improve Air Quality- Plant a tree (but not near power lines!)

.....

Attention PWC Water Customers



The latest edition of Fayetteville PWC's annual Water Quality Report, as required by the EPA, is now available. This report is a snapshot of last year's water quality. Included are details about your sources of water, what it contains, and how it compares to standards set by regulatory agencies. Look for it online at faypwc.com/water-quality-report/. To request a copy by mail, please call 910-223-4009.



Work Zone Safety is in Your Hands

While road work may be a hassle, please be courteous and respectful of the workers present. Here are some extra safety tips to keep in mind when you encounter a work zone:

Reduce your distractions

Distraction-free driving is always important. It's especially important when you're driving in a construction zone. Here it's imperative that you're on high alert. When approaching or entering a construction zone, turn down (or turn off) your radio, end cell phone calls, and keep both hands on the wheel and eyes on the road.

Look for the orange diamond signs

Signs will be placed alongside the roadway well before the actual construction zone to warn drivers. As soon as you see a "work zone ahead" sign, reduce your speed and be on the lookout for workers, machinery and obstacles.

Orange cones direct the flow of traffic in work zones

Do not steer into or run over these objects. You will be responsible for any damage to your vehicle if you make contact with construction cones or barrels.

Flaggers are often used to stop and direct traffic in work zones

Their instructions supersede any posted or implied traffic signals. Their presence will be announced by orange construction signs that say "flagger ahead." Keep an eye out for flaggers in all construction zones and keep your vehicle as far away from their bodies as possible. Thanks for helping keep our workers safe while we work to keep your services reliable

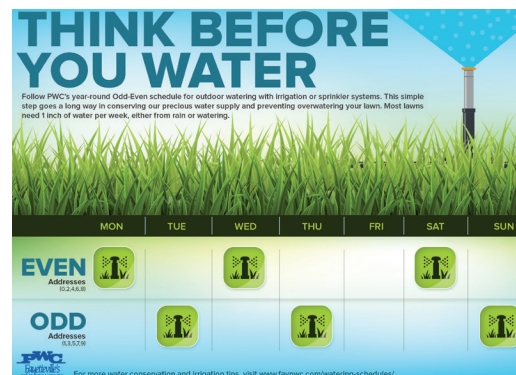
Info courtesy of driving-tests.org

Thank a Line Worker

We appreciate our line workers and what they do for our customers every day! In 2013, Congress designated April 18 as National Lineman Appreciation Day, a day to recognize the efforts of line workers across the U.S. in keeping the power on and protecting public safety.

- Line workers are often first responders during storms and other catastrophic events, working to make the scene safe for other public safety heroes
- Line workers work with thousands of volts of electricity high atop power lines 24 hours a day, 365 days a year, to keep electricity flowing
- Line workers often work under dangerous conditions, far from their families, to construct and maintain our reliable electric grid
- Line workers put their lives on the line every day with little recognition from the community regarding the danger of their work

Year-Round Outdoor Watering Schedules



The Odd/Even watering schedules for Fayetteville PWC customers are year-round. Following these guidelines is a simple step that goes a long way to conserve our precious water supply and manage our daily water use.

- Think before you water and don't just water because it is your watering day.
- Adjust your sprinklers to water only the landscaping in your yard and be sure not to overwater. One inch of water is usually enough.
- Always remember to turn off your sprinklers when it rains.
- Don't water when it's windy or during the hottest times of day.

CONSERVATION
CORNER