



FAYETTEVILLE PUBLIC WORKS COMMISSION

PROCUREMENT DEPARTMENT

<https://www.faypwc.com/bids/>

Bid Addendum

PWC Number: PWC2324050

Bid Title : LANDSCAPING AND MAINTENANCE FOR PWC OPERATIONS COMPLEX

Bid Opening Date and Time: December 21, 2023, 5:00 pm

Addendum Number: 2

Addendum Date: December 15, 2023

Procurement Advisor: Carla Wint

procurement@faypwc.com

-
1. This addendum does not need to be returned.

 2. Following are questions received about the solicitation and the SME's answers to the questions.
 - Q1.** Please provide the most recent bid tabulation.
 - A1.** The most recent bid tabulation from 2013 has been included in this addendum as an attachment below.
 - Q2.** Please provide the pricing form the last 12-month contract period to include increases that could have been requested by the previous contractor.
 - A2.** PWC has spent approximately \$120,000.00 on Landscaping Services in the past 12-month contract period. The contractor requested no increases during this period.
 - Q3.** Are the contractors responsible for the exterior curb and gutter areas of the property? Currently they are not being serviced.
 - A3.** Yes, the contractor is responsible for the exterior curb and gutter areas.
 - Q4.** How many irrigation clocks are there?
 - A4.** There are 8 irrigation clocks on site.
 - Q5.** How many irrigation zones are there on each clock?
 - A5.** There are approximately 93 zones on the complex. Please see attached irrigation plans that PWC has for the Operations Complex. Please note that there have been changes that may not be accurately reflected on the plan sheets. It shall be the responsibility of the contractor to verify accuracy.
 - Q6.** How many heads and what type are they on each zone?
 - A6.** Please see the included plan sheets. PWC does not have an exact number of irrigation heads on site. It shall be the responsibility of the contractor to verify the number of heads onsite if needed to submit a bid. Currently PWC has two types of irrigation heads onsite: Toro and Hunter PGP's. All replacement heads have been Hunter PGP's recently due to availability.
-

OPERATIONS CENTER

LANDART SOLUTIONS	CARDINAL LANDSCAPING	GREEN BIZ LANDSCAPING	DUNLAP LAWN SER	FAYETTEVILLE LANDSCAPING
-------------------	----------------------	-----------------------	-----------------	--------------------------

A. GENERAL LAWN & PLANT MAINT.

March	\$5,583.00	\$1,800.00	\$5,898.00	\$4,200.00	\$6,980.00
April	\$8,243.00	\$2,000.00	\$7,577.00	\$4,300.00	\$6,980.00
May	\$8,243.00	\$2,300.00	\$7,198.00	\$4,400.00	\$6,980.00
June	\$8,243.00	\$3,500.00	\$10,879.00	\$4,400.00	\$6,980.00
July	\$8,243.00	\$2,400.00	\$9,399.00	\$4,500.00	\$6,980.00
August	\$8,243.00	\$2,400.00	\$10,058.00	\$4,800.00	\$6,980.00
September	\$8,243.00	\$2,300.00	\$8,592.00	\$4,800.00	\$6,980.00
October	\$7,483.00	\$2,200.00	\$7,660.00	\$5,900.00	\$6,980.00
November	\$7,483.00	\$2,200.00	\$7,579.00	\$5,800.00	\$7,500.00
December	\$7,483.00	\$1,000.00	\$7,579.00	\$5,600.00	\$6,980.00
January	\$6,883.00	\$850.00	\$2,757.00	\$4,600.00	\$3,650.00
February	\$6,883.00	\$838.00	\$3,196.00	\$3,200.00	\$3,650.00
Mar-14	\$5,583.00	\$1,800.00	\$5,914.00	\$4,300.00	\$6,980.00
	\$96,839.00	\$25,588.00	\$94,286.00	\$60,800.00	\$84,600.00

B. SOIL TESTING, FERTILIZER, HERBICIDE INSECT CONTROL, PH ADJUSTMENT

March	\$8,760.00	\$1,750.00	\$1,350.00	\$2,400.00	\$3,480.00
April	\$1,092.00	\$2,400.00	\$2,750.00	\$2,800.00	\$1,972.00
May	\$232.00	\$650.00	\$750.00	\$2,900.00	\$0.00
June	\$3,777.00	\$0.00	\$2,750.00	\$3,200.00	\$3,480.00
July	\$232.00	\$300.00	\$1,500.00	\$3,100.00	\$0.00
August	\$232.00	\$350.00	\$0.00	\$2,300.00	\$0.00
September	\$232.00	\$1,420.00	\$2,750.00	\$2,200.00	\$0.00
October	\$5,537.00	\$0.00	\$1,525.00	\$2,700.00	\$0.00
November	\$232.00	\$0.00	\$2,750.00	\$2,600.00	\$3,480.00
December	\$232.00	\$0.00	\$0.00	\$2,800.00	\$0.00
January	\$232.00	\$2,500.00	\$0.00	\$2,400.00	\$3,480.00
February	\$3,612.00	\$300.00	\$1,350.00	\$3,200.00	\$0.00
Mar-14	\$8,760.00	\$1,750.00	\$1,459.00	\$2,400.00	\$3,480.00
	\$33,162.00	\$11,420.00	\$18,934.00	\$35,000.00	\$19,372.00

LANDART SOLUTIONS	CARDINAL LANDSCAPING	GREEN BIZ LANDSCAPING	DUNLAP LAWN SER	FAYETTEVILLE LANDSCAPING
-------------------	----------------------	-----------------------	-----------------	--------------------------

C. IRRIGATION SYSTEM MAINT. & MONIT.

March	\$600.00	\$600.00	\$1,150.00	\$1,400.00	\$2,185.00
April	\$325.00	\$210.00	\$350.00	\$600.00	\$550.00
May	\$325.00	\$324.00	\$350.00	\$600.00	\$550.00
June	\$325.00	\$324.00	\$350.00	\$600.00	\$550.00

GREENVIEW PARTNERS	GREEN BIZ LANDSCAPING
2012	2013

\$1,666.00	\$2,498.00
\$1,666.00	\$2,451.00
\$1,666.00	\$2,452.00
\$1,666.00	\$2,453.00
\$1,666.00	\$2,454.00
\$1,666.00	\$2,455.00
\$1,666.00	\$2,516.00
\$1,666.00	\$2,712.00
\$1,666.00	\$2,451.00
\$1,666.00	\$2,417.00
\$833.00	\$2,498.00
\$833.00	\$1,135.00
\$0.00	\$0.00
\$18,326.00	\$28,492.00

\$0.00	\$0.00
\$816.00	\$2,750.00
\$0.00	\$0.00
\$2,848.00	\$2,750.00
\$0.00	\$0.00
\$0.00	\$0.00
\$0.00	\$2,750.00
\$2,848.00	\$0.00
\$0.00	\$950.00
\$0.00	\$0.00
\$0.00	\$0.00
\$2,816.00	\$1,305.00
\$0.00	\$0.00
\$9,328.00	\$10,505.00

GREENVIEW PARTNERS	GREEN BIZ LANDSCAPING
--------------------	-----------------------

\$150.00	\$810.00
\$150.00	\$250.00
\$150.00	\$250.00
\$150.00	\$350.00

July	\$325.00	\$324.00	\$350.00	\$600.00	\$550.00
August	\$325.00	\$324.00	\$350.00	\$600.00	\$550.00
September	\$325.00	\$324.00	\$350.00	\$600.00	\$550.00
October	\$325.00	\$210.00	\$350.00	\$600.00	\$375.00
November	\$325.00	\$210.00	\$1,565.00	\$600.00	\$375.00
December	\$325.00	\$600.00	\$0.00	\$1,400.00	\$375.00
January	\$0.00	\$0.00	\$0.00	\$0.00	\$0.00
February	\$0.00	\$0.00	\$0.00	\$0.00	\$0.00
Mar-14	\$600.00	\$600.00	\$1,350.00	\$1,200.00	\$2,185.00
	\$4,125.00	\$4,050.00	\$6,515.00	\$8,800.00	\$8,795.00

\$150.00	\$350.00
\$150.00	\$350.00
\$150.00	\$250.00
\$150.00	\$250.00
\$0.00	\$810.00
\$0.00	\$0.00
\$0.00	\$0.00
\$0.00	\$0.00
\$0.00	\$0.00
\$0.00	\$0.00
\$1,200.00	\$3,670.00

D. ANNUAL BEDS	\$2,250.00	\$1,000.00	\$1,395.00	\$2,200.00	\$2,365.00
-----------------------	------------	------------	------------	------------	------------

\$2,500.00	\$1,400.00
------------	------------

E. MULCH REPLENISHMENT	\$45,325.00	\$29,400.00	\$29,950.00	\$33,000.00	\$26,950.00
-------------------------------	-------------	-------------	-------------	-------------	-------------

\$34,300.00	\$25,135.00
-------------	-------------

F. DRAINAGE EASEMENT MAINTENANCE	\$2,000.00	\$3,200.00	\$4,150.00	\$8,000.00	\$1,550.00
---	------------	------------	------------	------------	------------

\$1,800.00	\$3,857.19
------------	------------

SUBTOTAL	\$183,701.00	\$74,658.00	\$155,230.00	\$147,800.00	\$143,632.00
-----------------	--------------	-------------	--------------	--------------	--------------

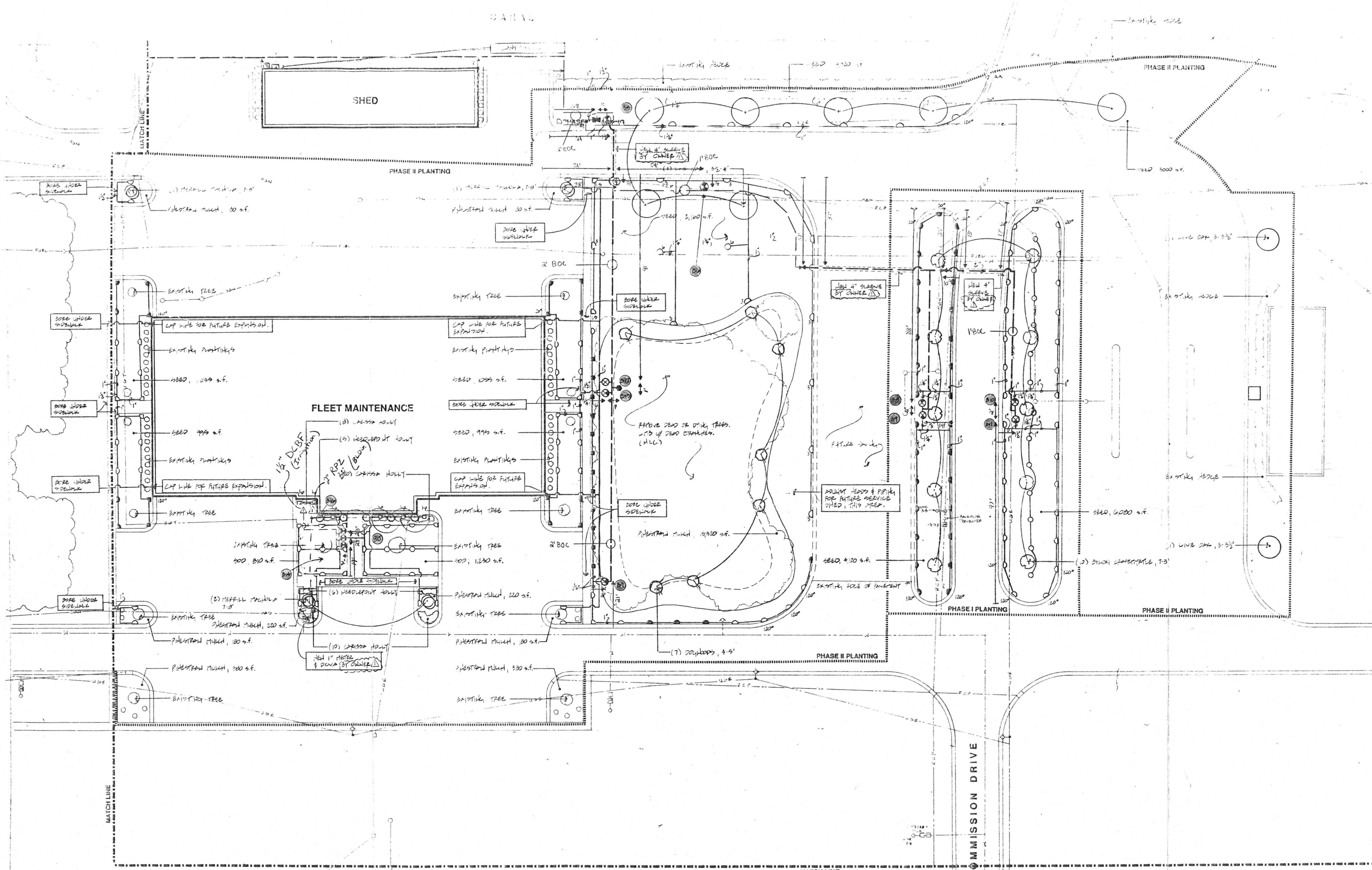
\$67,454.00	\$73,059.19
-------------	-------------

G. SIDEWALKS, SNOW/ICE REMOVAL	\$585.00	\$985.00	\$1,350.00	\$2,000.00	\$4,000.00
A. PRETREATMENT (LUMP SUM)	\$35.00	\$30.00	\$45.00	\$40.00	\$250.00
B. REMOVAL (HOURLY)	\$125.00	\$150.00	\$95.00	\$180.00	\$500.00

\$1,000.00	\$0.00
\$100.00	\$225.00
	\$45.00

H. FIRE ANT CONTROL					
A. BAIT CONTROL (ANNUAL)					
B. CONTACT CONTROL (ANNUAL)					

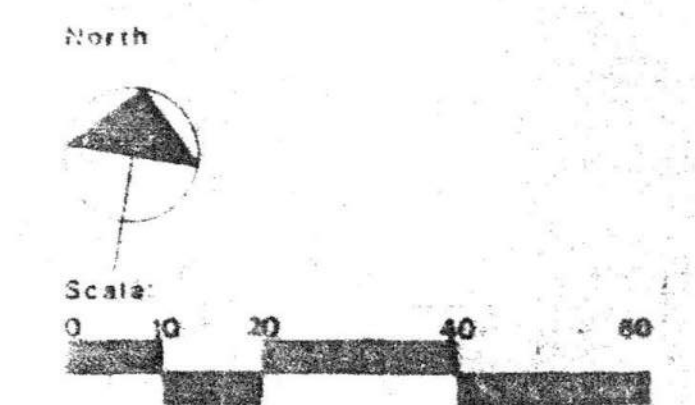
--	--



SOUTH CAMPUS
OPERATIONS COMPLEX



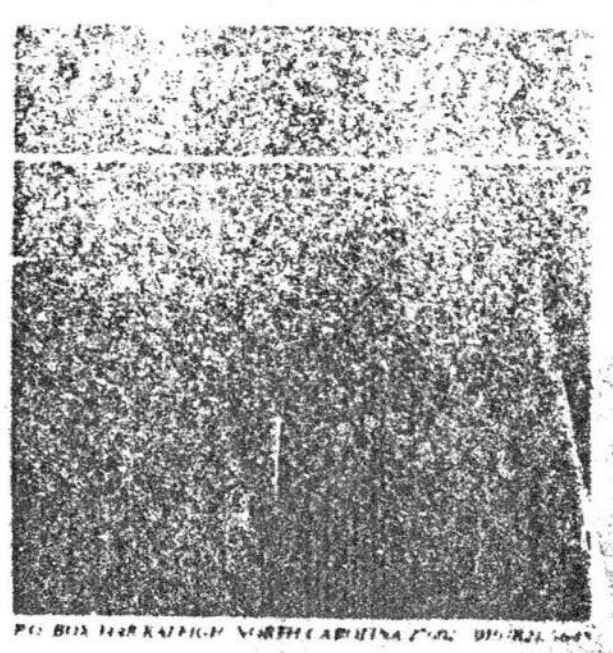
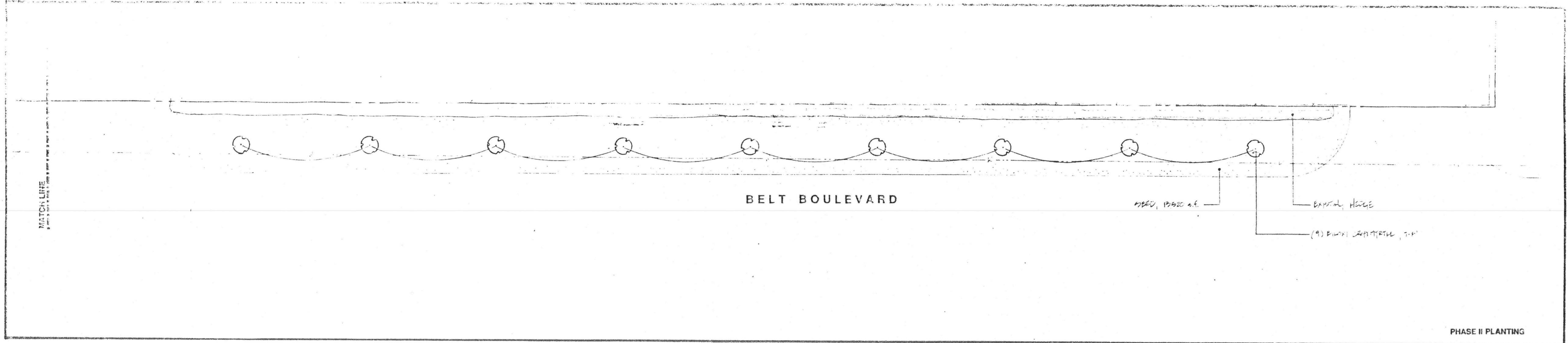
Irrigation Plan



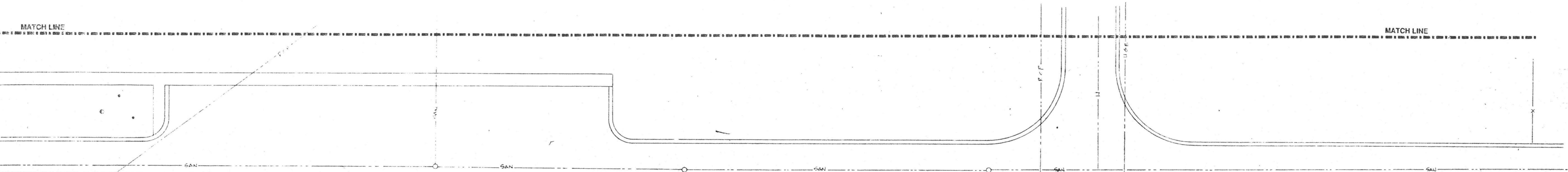
IRRIGATION KEY

	Irrigation Main, Class 200 PVC, size as shown
	Irrigation Lateral, Class 200 PVC, size as shown
	Existing Water Line
	Fixed Spray Head, 4" pop-up, 12' radius
	Fixed Spray Head, 4" pop-up, 15' radius
	Fixed Spray Head, 4" pop-up, 4' SST
	Fixed Spray Head, 4" pop-up, 3' SST
	Fixed Spray Head, 4" pop-up, EST
	Clear Drive Head, 3"-4" pop-up, matched precipitation rate (Number denotes approximate spm per head at 50 cph)
	Designates 12" Pop-Up Fixed Spray Body
	1" Electric Valve, With Ball Valve, in Meter Box
	1.5" Electric Valve, With Ball Valve, in Meter Box
	2" Electric Valve, With Ball Valve, in Meter Box
	Isolation Valve, in 10" Round Valve Box (same size as adjacent main)
	.75" Quick Coupler Valve in 6" Round Valve Box
	Irrigation Controllers

Turf Services, Inc.
PWC (PS-BUILTS)
3/17/93
(919) 439-4977



ALL IRRIGATION THIS SHEET IS PHASE I IRRIGATION.



SOUTH CAMPUS OPERATIONS COMPLEX



IRRIGATION KEY

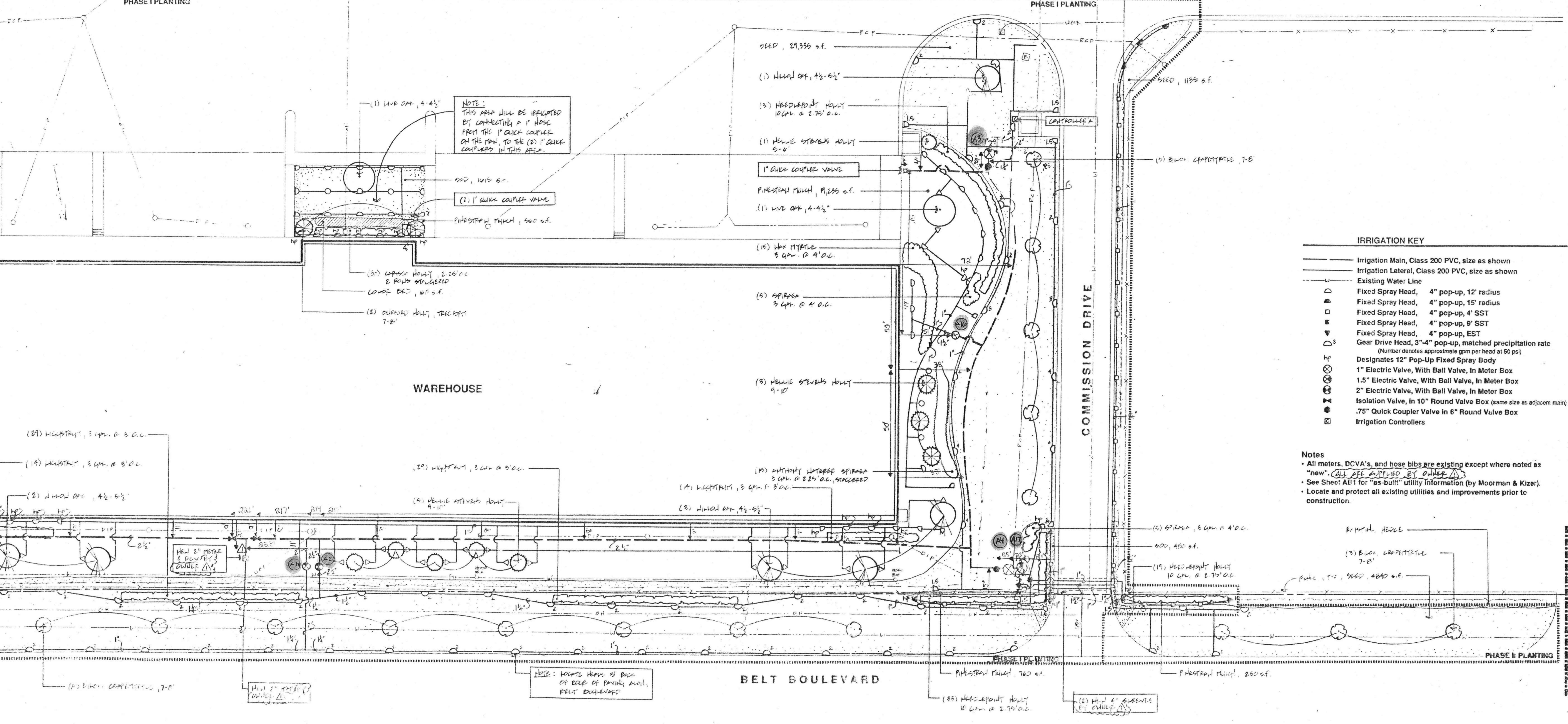
—	Irrigation Main, Class 200 PVC, size as shown
—	Irrigation Lateral, Class 200 PVC, size as shown
—	Existing Water Line
○	Fixed Spray Head, 4" pop-up, 12' radius
○	Fixed Spray Head, 4" pop-up, 15' radius
○	Fixed Spray Head, 4" pop-up, 4' SST
○	Fixed Spray Head, 4" pop-up, 8' SST
○	Fixed Spray Head, 4" pop-up, EST
○	Gear Drive Head, 3"-4" pop-up, matched precipitation rate (Number denotes approximate gpm per head at 50 psi)
⊙	Designates 12" Pop-Up Fixed Spray Body
⊙	1" Electric Valve, With Ball Valve, In Meter Box
⊙	1.5" Electric Valve, With Ball Valve, In Meter Box
⊙	2" Electric Valve, With Ball Valve, In Meter Box
⊙	Isolation Valve, In 10" Round Valve Box (same size as adjacent main)
⊙	.75" Quick Coupler Valve In 6" Round Valve Box
⊙	Irrigation Controllers

Irrigation Plan

North

Notes

- All meters, DCVA's, and hose bibs are existing except where noted as "new". ALL ARE SUPPLIED BY OWNER.
- See Sheet AB1 for "as-built" utility information (by Moorman & Kizer).
- Locate and protect all existing utilities and improvements prior to construction.



JULIUS SERVICES INC.
P.O. BOX (AS-BUILT)
3/17/92
(910) 469-4977

AS-BUILT

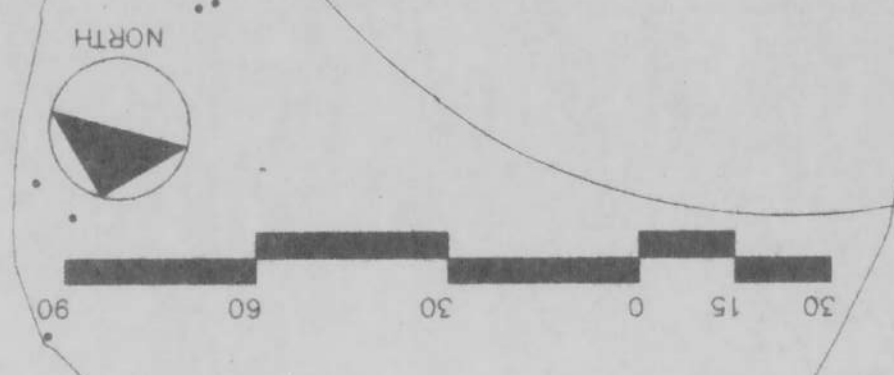
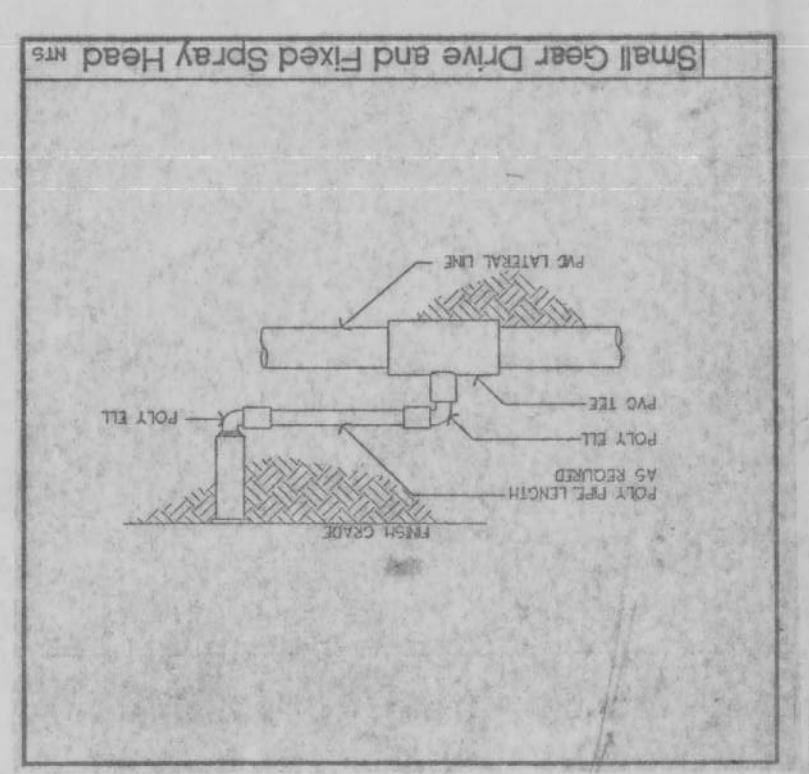
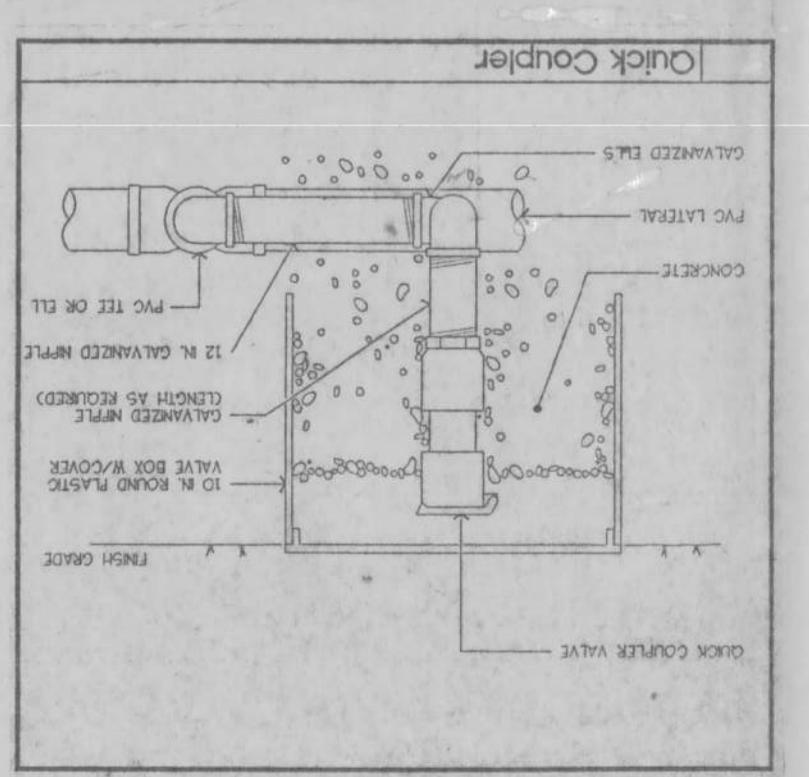
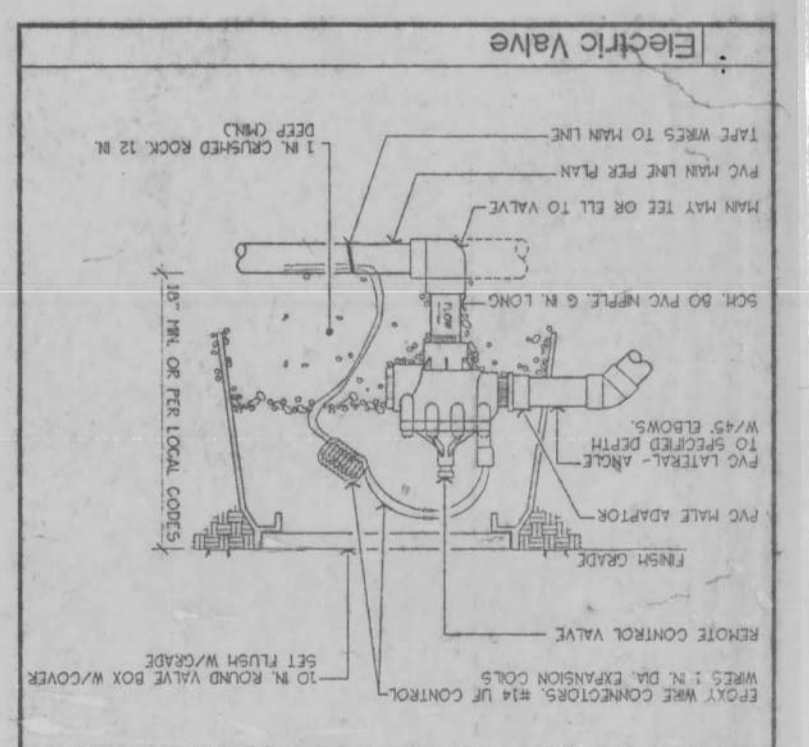
Irrigation Plan

Operations Center
PMC of Fayetteville
Fayetteville, North Carolina



- Irrigation Notes:**
- Locate and protect all utilities and improvements prior to construction.
 - Coordinate layout with final planting layout.
 - Final controller location to be determined on site with Owner's representative.

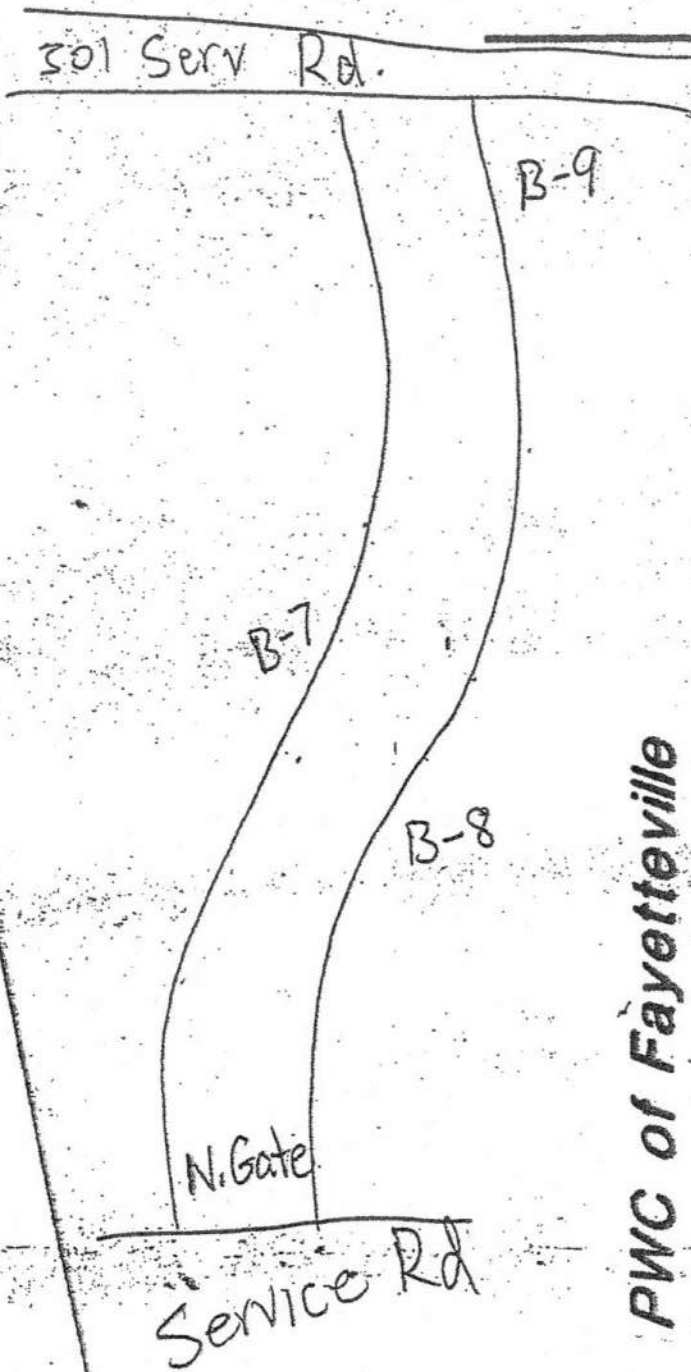
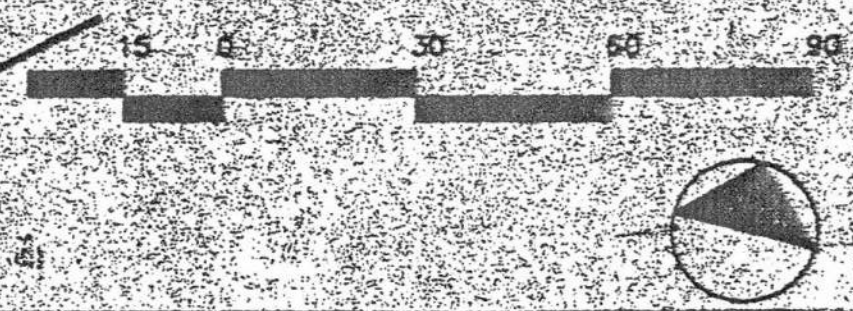
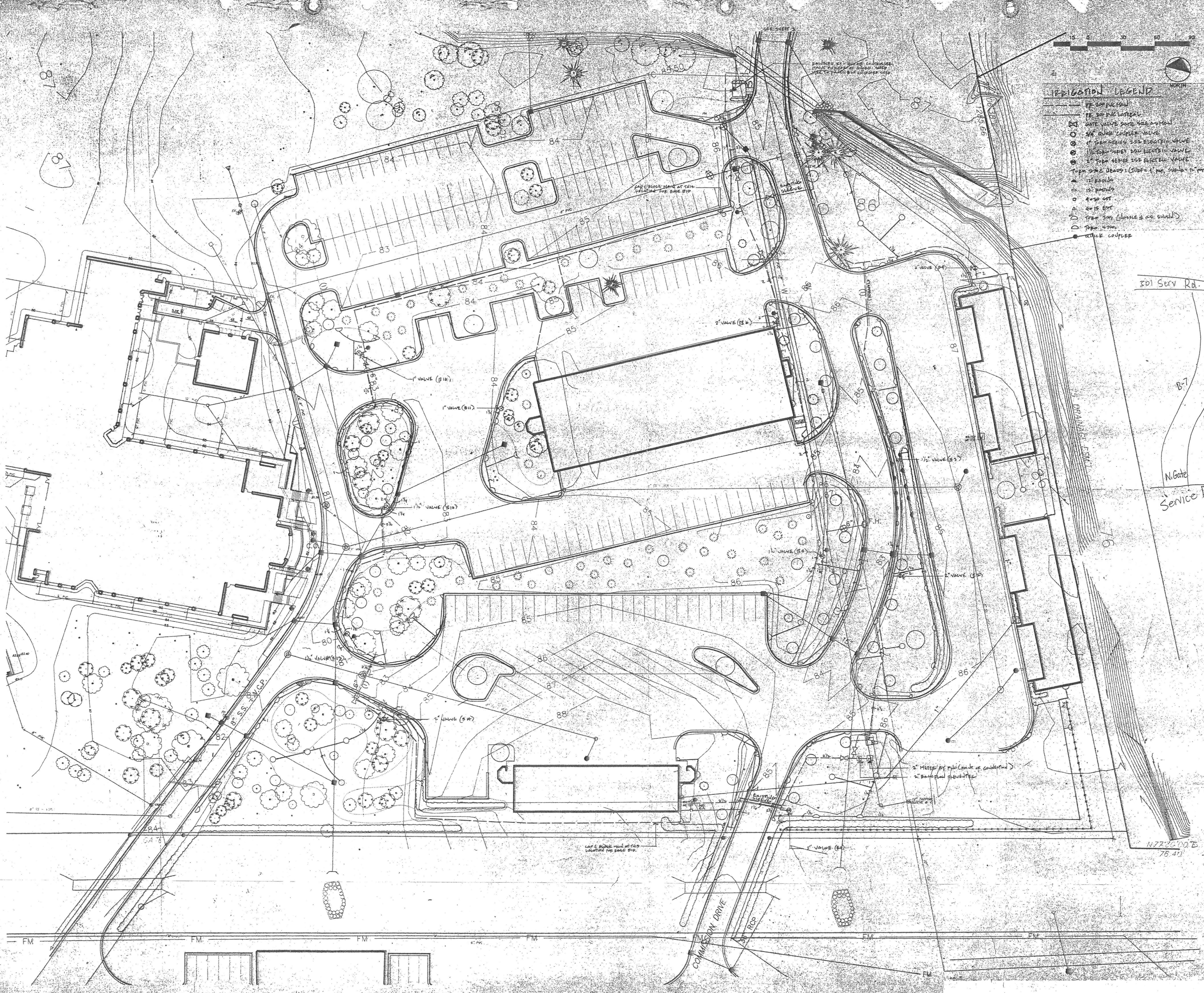
- IRRIGATION LEGEND**
- PR 200 pvc MAIN
 - PR 200 pvc LATERAL
 - TORO 570z COM SPRINKLERS (TURN = 4" POP-UP; SHRUB = 12" POP-UP)
 - 12" RADIUS
 - 15" RADIUS
 - 4" SST
 - 4" EST
 - TORO 300 SERIES FIXED-RADIUS SPRINKLERS (NUMBER INDICATES NOZZLE SIZE)
 - TORO 5700 SERIES SPRINKLERS (50" = 1.5"; 180" = 3.0"; 360" = 6.0)
 - TORO FLO - PRO IN-LINE FLOW VALVE - 1"
 - TORO 252 SERIES VALVE - 1"
 - TORO 252 SERIES VALVE - 1.5"
 - TORO 252 SERIES VALVE - 2"
 - GATE VALVE - SAME SIZE AS MAIN
 - TORO 252 SERIES VALVE - 2"
 - IRIGATION CONTROL VALVE
 - IRIGATION CONTROLLER
 - IRIGATION CONTROL VALVE
 - 7.5" QUICK COUPLER VALVE
 - * DETAILS AND ALTERNATE ZONE (EXCEPT WHERE NOTED)



IRRIGATION LEGEND

- 1" VALVE (B10)
- 1" VALVE (B11)
- 1 1/2" VALVE (B12)
- 1 1/2" VALVE (B13)
- 1 1/2" VALVE (B14)
- 1 1/2" VALVE (B15)
- 1 1/2" VALVE (B16)
- 1 1/2" VALVE (B17)
- 1 1/2" VALVE (B18)
- 1 1/2" VALVE (B19)
- 1 1/2" VALVE (B20)
- 1 1/2" VALVE (B21)
- 1 1/2" VALVE (B22)
- 1 1/2" VALVE (B23)
- 1 1/2" VALVE (B24)
- 1 1/2" VALVE (B25)
- 1 1/2" VALVE (B26)
- 1 1/2" VALVE (B27)
- 1 1/2" VALVE (B28)
- 1 1/2" VALVE (B29)
- 1 1/2" VALVE (B30)
- 1 1/2" VALVE (B31)
- 1 1/2" VALVE (B32)
- 1 1/2" VALVE (B33)
- 1 1/2" VALVE (B34)
- 1 1/2" VALVE (B35)
- 1 1/2" VALVE (B36)
- 1 1/2" VALVE (B37)
- 1 1/2" VALVE (B38)
- 1 1/2" VALVE (B39)
- 1 1/2" VALVE (B40)
- 1 1/2" VALVE (B41)
- 1 1/2" VALVE (B42)
- 1 1/2" VALVE (B43)
- 1 1/2" VALVE (B44)
- 1 1/2" VALVE (B45)
- 1 1/2" VALVE (B46)
- 1 1/2" VALVE (B47)
- 1 1/2" VALVE (B48)
- 1 1/2" VALVE (B49)
- 1 1/2" VALVE (B50)
- 1 1/2" VALVE (B51)
- 1 1/2" VALVE (B52)
- 1 1/2" VALVE (B53)
- 1 1/2" VALVE (B54)
- 1 1/2" VALVE (B55)
- 1 1/2" VALVE (B56)
- 1 1/2" VALVE (B57)
- 1 1/2" VALVE (B58)
- 1 1/2" VALVE (B59)
- 1 1/2" VALVE (B60)
- 1 1/2" VALVE (B61)
- 1 1/2" VALVE (B62)
- 1 1/2" VALVE (B63)
- 1 1/2" VALVE (B64)
- 1 1/2" VALVE (B65)
- 1 1/2" VALVE (B66)
- 1 1/2" VALVE (B67)
- 1 1/2" VALVE (B68)
- 1 1/2" VALVE (B69)
- 1 1/2" VALVE (B70)
- 1 1/2" VALVE (B71)
- 1 1/2" VALVE (B72)
- 1 1/2" VALVE (B73)
- 1 1/2" VALVE (B74)
- 1 1/2" VALVE (B75)
- 1 1/2" VALVE (B76)
- 1 1/2" VALVE (B77)
- 1 1/2" VALVE (B78)
- 1 1/2" VALVE (B79)
- 1 1/2" VALVE (B80)
- 1 1/2" VALVE (B81)
- 1 1/2" VALVE (B82)
- 1 1/2" VALVE (B83)
- 1 1/2" VALVE (B84)
- 1 1/2" VALVE (B85)
- 1 1/2" VALVE (B86)
- 1 1/2" VALVE (B87)
- 1 1/2" VALVE (B88)
- 1 1/2" VALVE (B89)
- 1 1/2" VALVE (B90)
- 1 1/2" VALVE (B91)
- 1 1/2" VALVE (B92)
- 1 1/2" VALVE (B93)
- 1 1/2" VALVE (B94)
- 1 1/2" VALVE (B95)
- 1 1/2" VALVE (B96)
- 1 1/2" VALVE (B97)
- 1 1/2" VALVE (B98)
- 1 1/2" VALVE (B99)
- 1 1/2" VALVE (B100)

IRRIGATION NOTES:
 1. CREATE AND PROTECT ALL UTILITIES AND STRUCTURES PRIOR TO CONSTRUCTION.
 2. ALL SLEEVES MUST BE PROTECTED UNLESS OTHERWISE SPECIFIED.
 3. ALL SLEEVES MUST BE PROTECTED UNLESS OTHERWISE SPECIFIED.
 4. ALL SLEEVES MUST BE PROTECTED UNLESS OTHERWISE SPECIFIED.
 5. ALL SLEEVES MUST BE PROTECTED UNLESS OTHERWISE SPECIFIED.
 6. ALL SLEEVES MUST BE PROTECTED UNLESS OTHERWISE SPECIFIED.
 7. ALL SLEEVES MUST BE PROTECTED UNLESS OTHERWISE SPECIFIED.
 8. ALL SLEEVES MUST BE PROTECTED UNLESS OTHERWISE SPECIFIED.
 9. ALL SLEEVES MUST BE PROTECTED UNLESS OTHERWISE SPECIFIED.
 10. ALL SLEEVES MUST BE PROTECTED UNLESS OTHERWISE SPECIFIED.

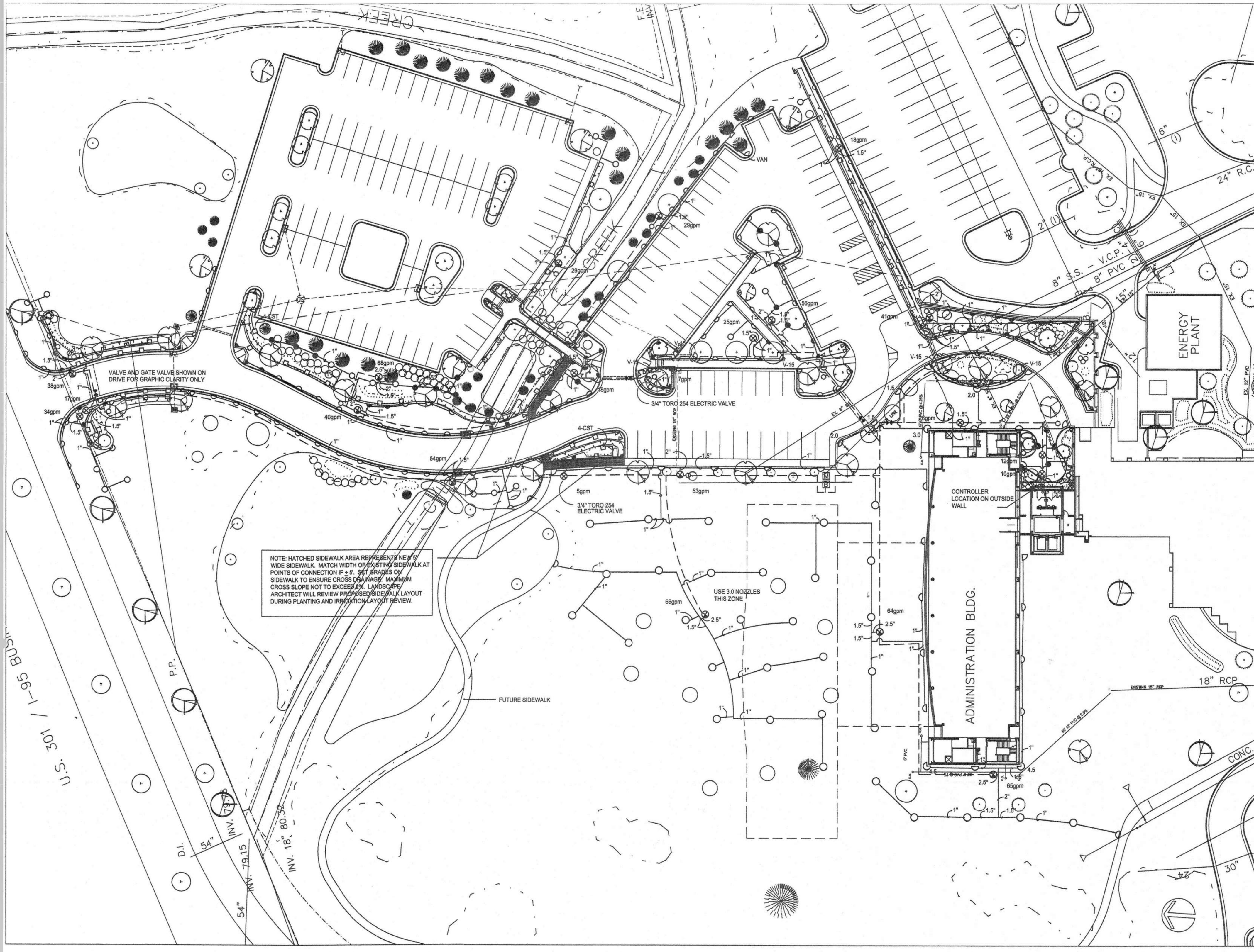


PWC of Fayetteville
 Operations Center
 Fayetteville, North Carolina

IRRIGATION PLAN
 SHED AREA AND SERVICE DRIVE

Date: 16 APRIL 1997 5:52 PM
 Revisions:

Project: PWC00000
 Sheet: 01 of 01

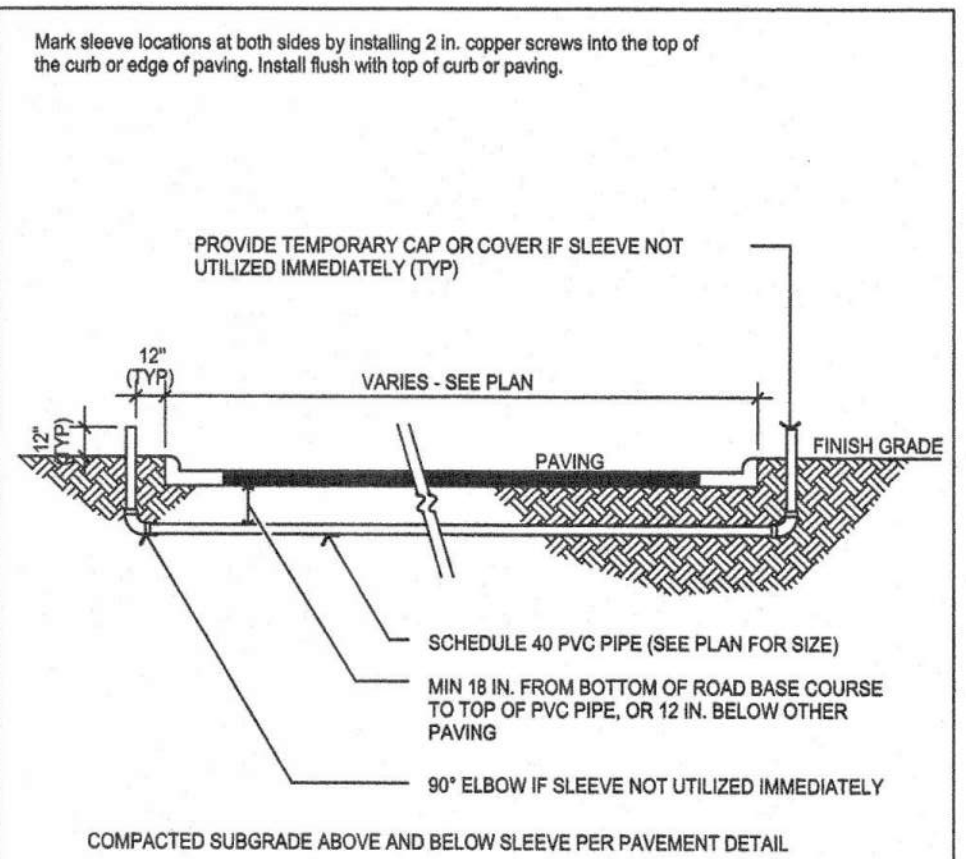


- KEY**
- Pr 200 pvc main 2.5"
 - Pr 200 pvc lateral size as noted
 - 6" pvc Irrigation Sleeve (existing) except under new sidewalks to be constructed
 - ⊗ 1" Toro 252 Series Angle Electric Valve
 - ⊗ 1.5" Toro 252 Series Angle Electric Valve
 - ⊗ 3/4" Quick Coupler in 6" Valve Box
 - ⊗ Gate Valve - Same Size as Main
 - ⊗ 2" Existing Backflow Preventer
 - ⊗ 2" Existing Meter
 - ⊗ Irrigation Controller - RB ESP-MC 24 Station
 - ⊗ Toro 570 Series Sprinkler:
 - ⊗ (6" Turf pop-up), (12" Plant Bed pop-up)
 - ⊗ 12' Radius
 - ⊗ 15' Radius
 - ⊗ 4-EST
 - ⊗ 4-SST
 - ⊗ 9-SST
 - (Unless otherwise noted)
 - ⊗ Toro Super 700 Series Sprinklers
 - ⊗ Nozzle 6.0, Nozzle 3.0, Nozzle 1.5
 - (Unless otherwise noted)

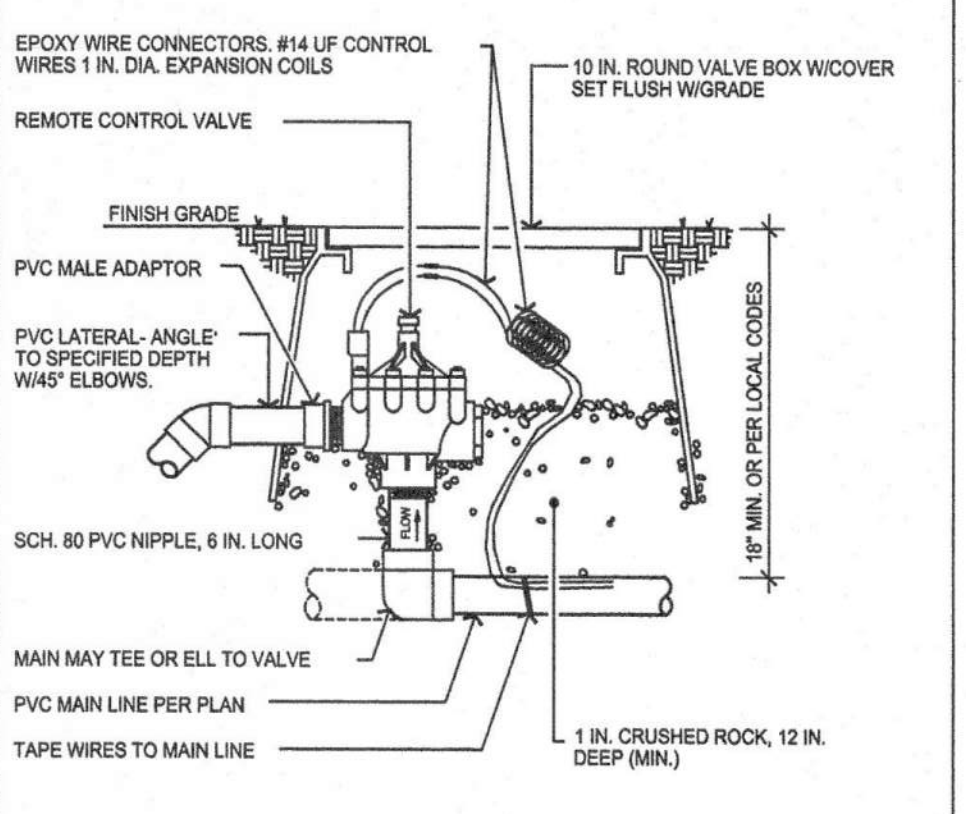
IRRIGATION NOTES

- Locate and protect all utilities and improvements prior to construction.
- Coordinate layout with final planting layout.
- Final controller location to be determined on site with Owner's representative.
- Point of connection: Existing 2" meter and backflow.
- Contractor to install power from external point of connection to controller.
- Pipes shown under trees to be routed around trees to be planted.
- Pipes, valves or irrigation heads shown on pavement for graphic clarity only.

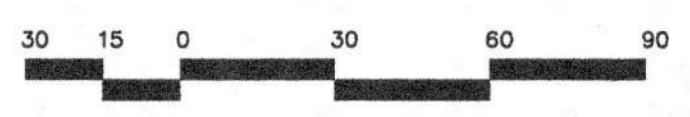
NOTE: HATCHED SIDEWALK AREA REPRESENTS NEW 5' WIDE SIDEWALK. MATCH WIDTH OF EXISTING SIDEWALK AT POINTS OF CONNECTION ± 1/8" SET GRADES OF SIDEWALK TO ENSURE CROSS DRAINAGE. MAXIMUM CROSS SLOPE NOT TO EXCEED 1/4". LANDSCAPE ARCHITECT WILL REVIEW SIDEWALK LAYOUT DURING PLANTING AND IRRIGATION LAYOUT REVIEW.



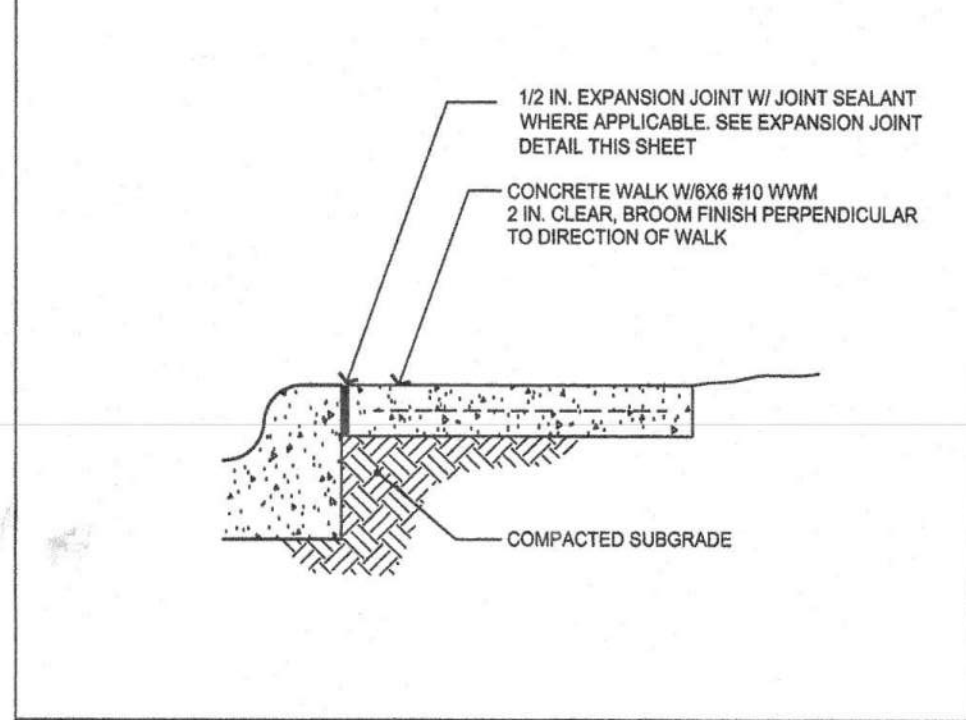
Irrigation/Electrical Sleeve 3/16"=1'-0"



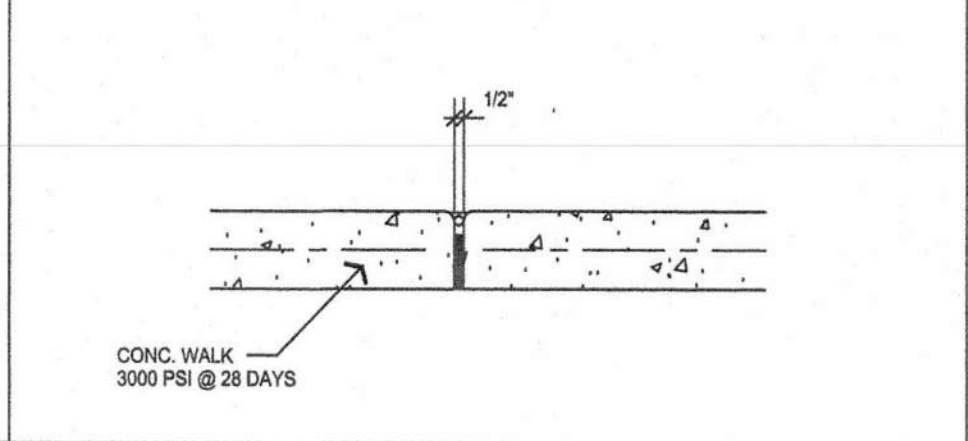
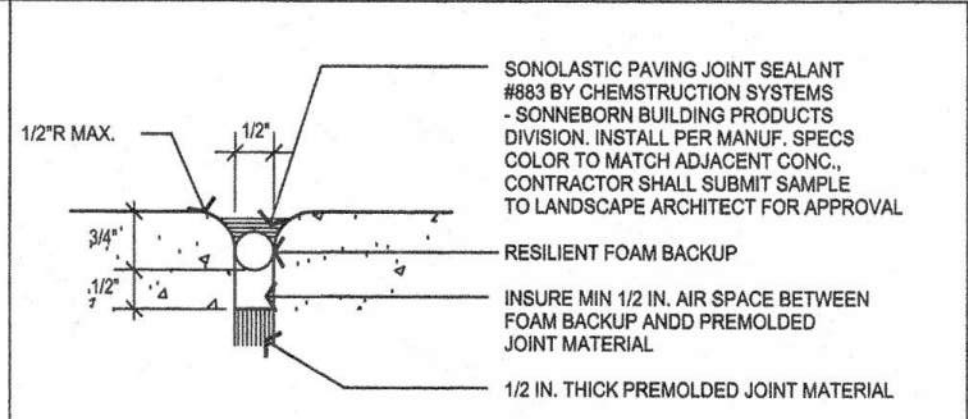
Electric Valve 1-1/2"=1'-0"



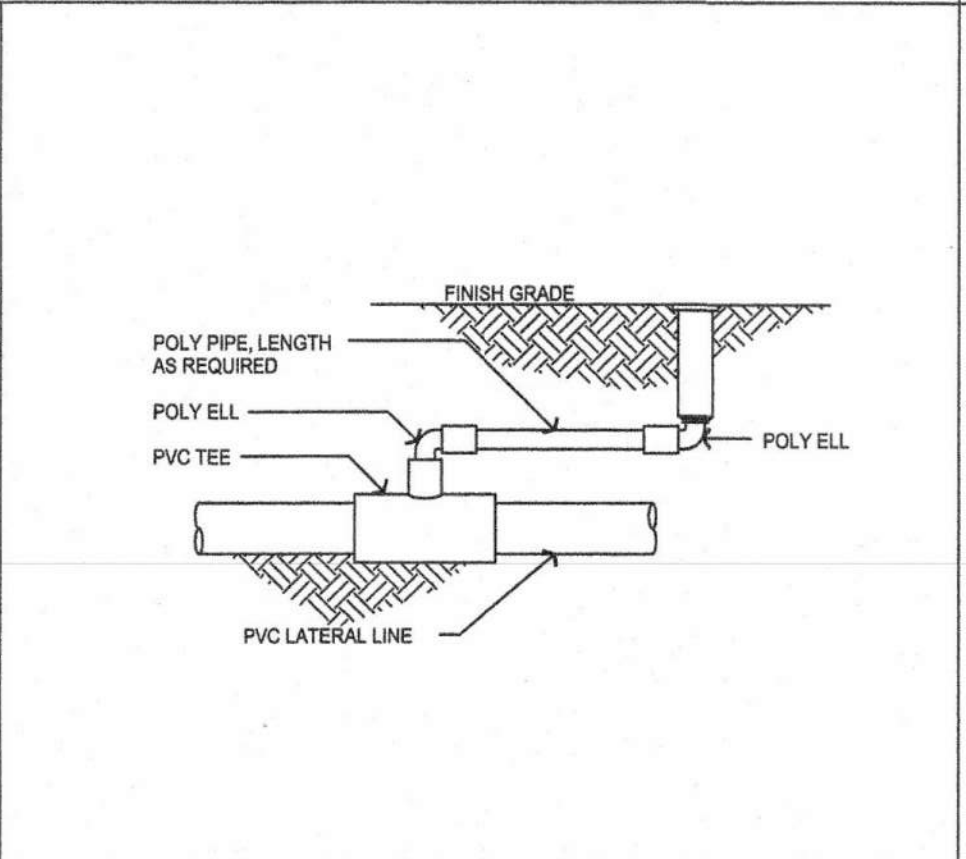
NOTE: Provide 1/2 in. expansion joint where walk abuts other vertical surfaces (curbs, walls, utilities, etc.). Provide 1 in. deep score joints in walk at spacing equal to walk width, or as otherwise indicated on plans. Provide 1/2 in. expansion joint in lieu of score joint every 30 ft. maximum.



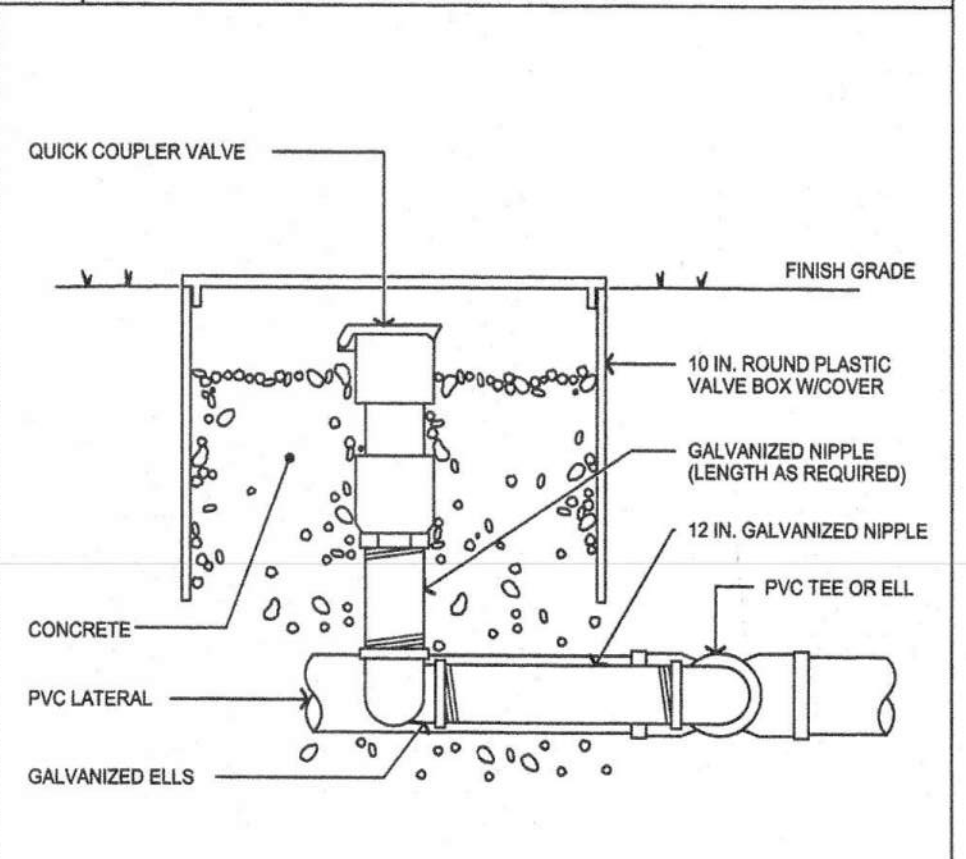
Concrete Walk 1"=1'-0"



Expansion Joint w/ Joint Sealant NTS



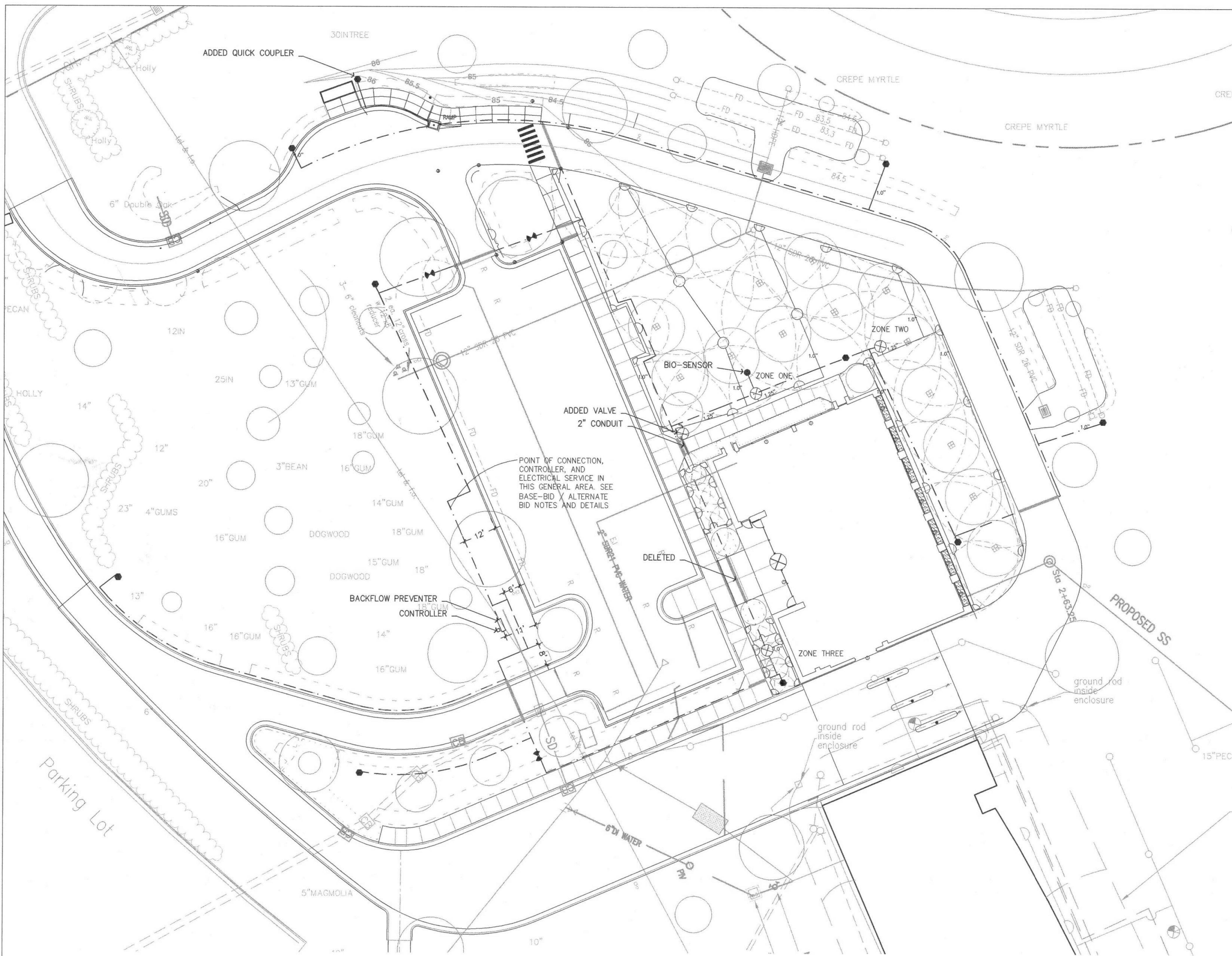
Small Gear Drive and Fixed Spray Head NTS



Quick Coupler 3/8"=1'-0"

Irrigation/Sidewalk Plan

Date 28 August 2000 For Bid
Release



PLAN NOTES

1. Locate and protect all utilities and structures prior to construction.
2. Coordinate final layout with landscape contractor.
3. Owner to supply power in the general area of the water point-of-connection. Contractor is responsible for coordination with the Owner and landscape architect regarding the exact location. Contractor's electrical P.O.C. is the owner-installed panel box.
4. All pipes under pavement in sleeves.
5. Route pipes to allow for plantings.
6. See Sheet L-4 for details.

BID NOTES - ADD ALTERNATE SUMMARY

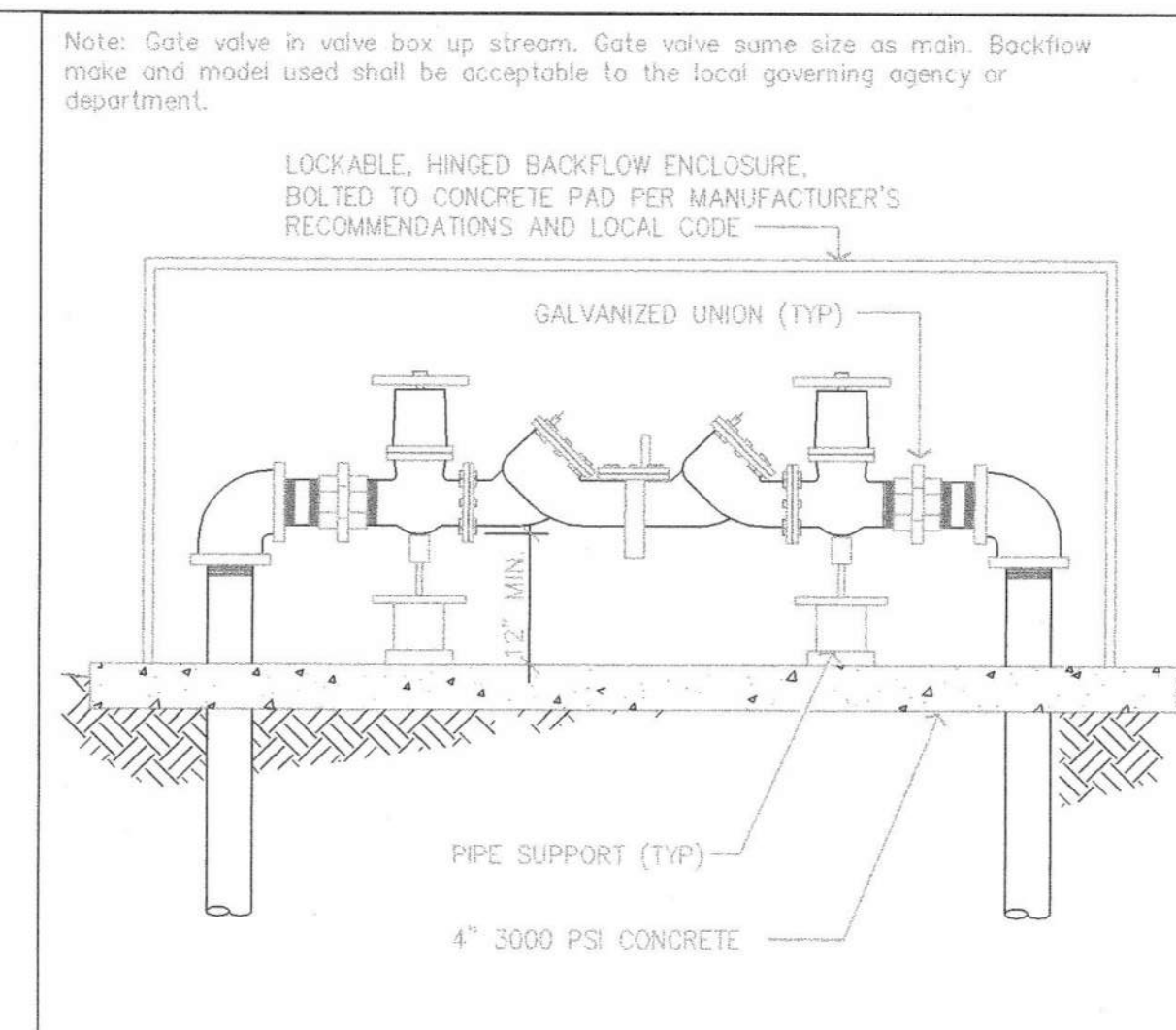
BASE BID:
 Point of connection is a 1.5" meter by the owner. Contractor installs backflow. Owner to supply all electrical service. Electrical P.O.C. for irrigation contractor is electrical panel box supplied by Owner.
 Base bid includes overhead irrigation and quick coupler water distribution as shown on sheet L3.

ADD ALTERNATE (PORTION OF A.A. G-9):
 Delete backflow and irrigation from L3
 Complete drip irrigation and quick coupler system, including all sleeves, equipment and labor, as shown on sheet L-2.
 Point of connection is 20,000 gal. cistern (see civil drawings) System includes pump system - see details sheet L-4.

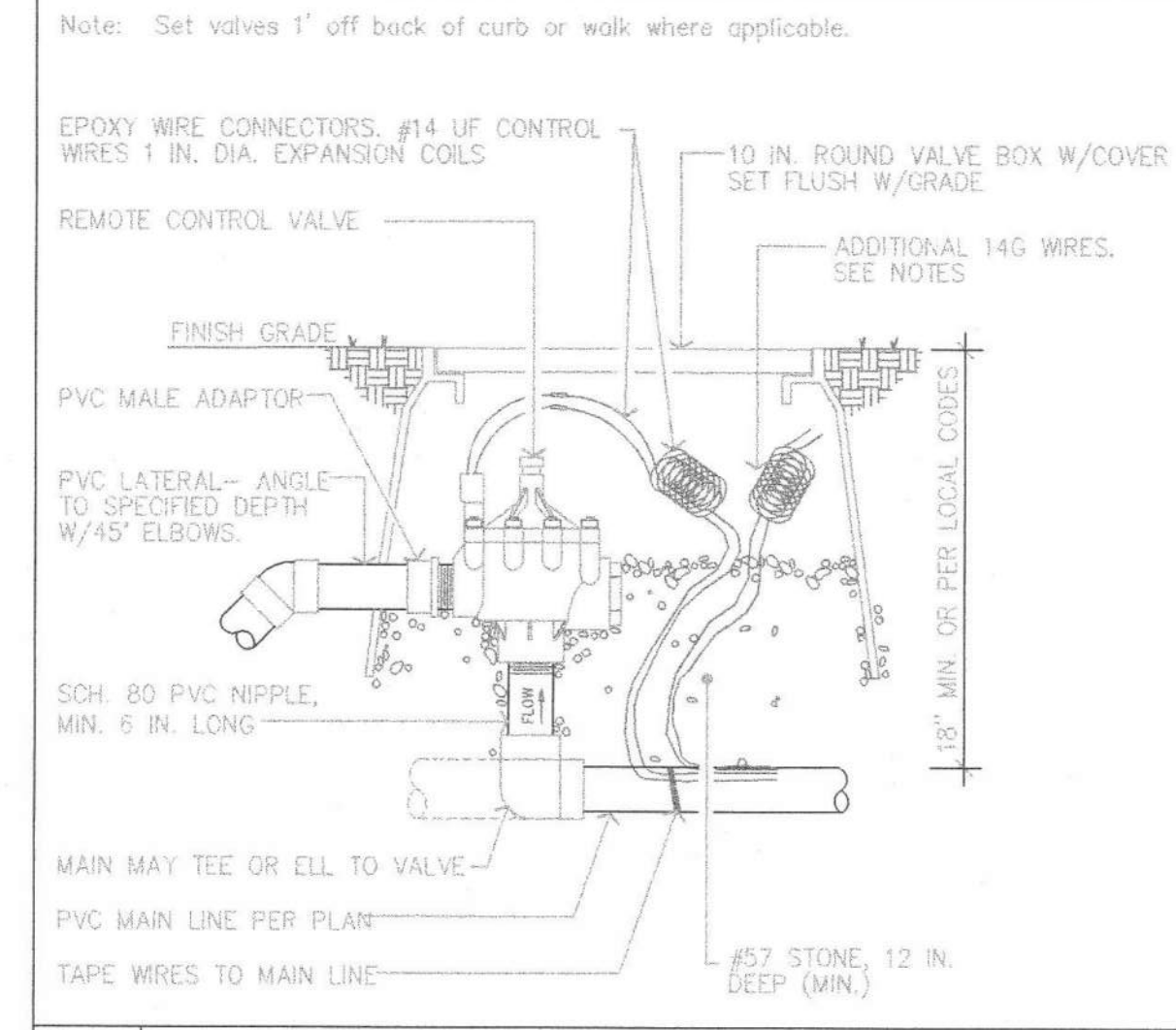
KEY

- 1.5" Schedule 40 PVC Main - 18" depth
- Pr 200 pvc lateral size as noted, 15" depth
- ⊗ 1" Electric Valve
- 3/4" Quick Coupler in 6" Valve Box
- ⊕ 1.5" Gate Valve
- ☐ Irrigation Controller - Hunter (or equal) ICC Metal 8 Sta. with manufacturer's stainless steel pedestal, with Baseline Watertech S100 (or equal) with sensor for each zone.

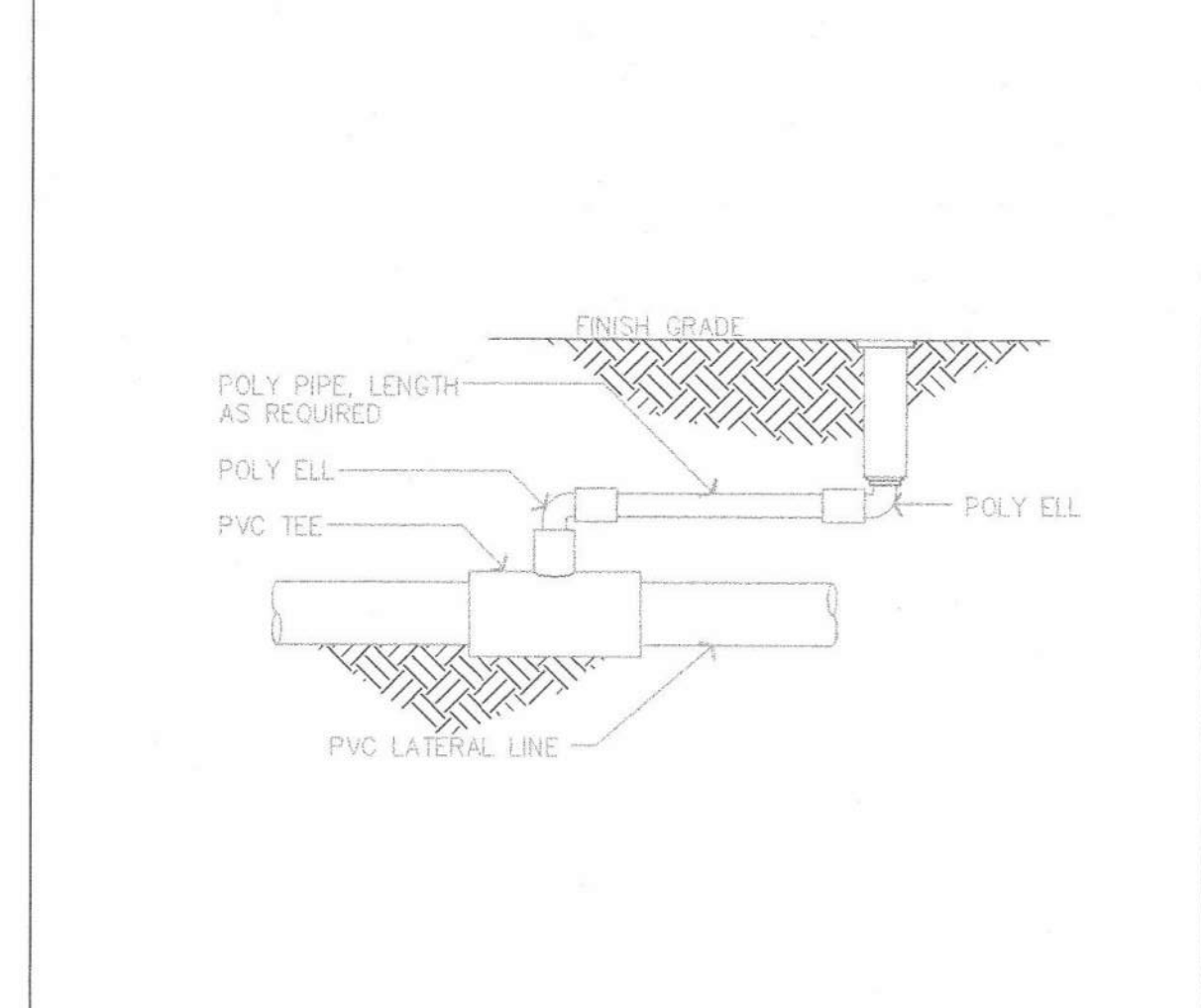
4 ZONES
 1/8" PER 1/4 HR.=1/2 PER HOUR



RPZ Backflow Preventer Not to Scale



Spray Irrigation Electric Valve 1-1/2"=1'-0"



Gear Drive, Fixed Spray, & Rotator Head



The LSV Partnership
Architects/Planners-AIA
 PO Box 53713, Fayetteville, North Carolina 28305
 Phone: 910.485.4108 / Fax: 910.485.8389
 email: info@lsvarchitects.com

LITTLE & LITTLE
 LANDSCAPE ARCHITECTURE / PLANNING
 PO BOX 1448 RALEIGH, NORTH CAROLINA 27602 919/821-8848



CUSTOMER SERVICE CENTER

OVERHEAD IRRIGATION
 26 MARCH 2009

REV: 3 June 2009	SCALE: 1" = 20'	DRAWING NO.
DRWN BY: ARM	PROJ. NO. 0505	L-3
CHK'D BY: RTP	DATE: #07045	
FILE NO.		

AS-BUILT DRAWING
 Johnson's Landscaping: 1/29/10

